

VILLAGE CONCEPT PLAN

*Step out of your
imagination and into the
unspoilt beauty of
Tenterfield Shire*

It's humble....

It's authentic...

It's True.

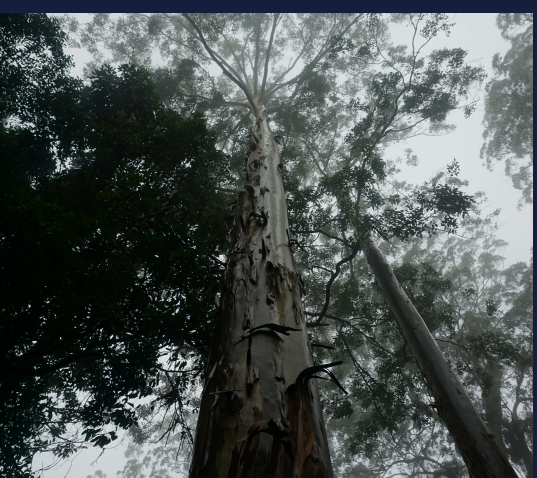


**THE
COUNCIL**

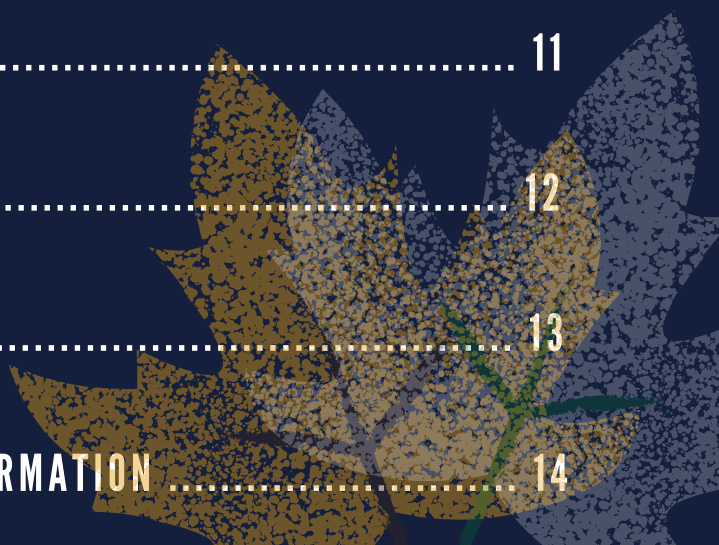




CONTENTS



PURPOSE OF THIS CONCEPT PLAN.....	3
OUR STORY	4
OUR AIMS	5
OUR VISION	6
MAIN AREA CONCEPT PLAN	7
KEY ACTIONS FOR LEGUME	8
COMMUNITY CONSULTATION	9
PUBLIC OPEN SPACE	10
LINKAGES	11
LANDSCAPE	12
TOURISM	13
IMPORTANT INFORMATION	14

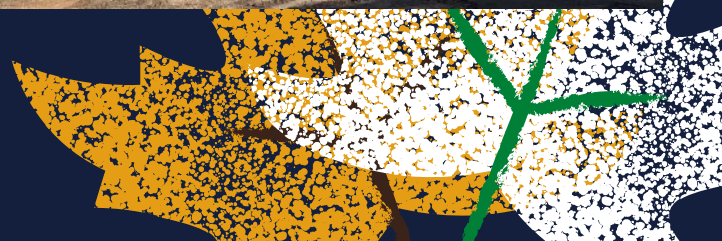


PURPOSE OF THIS CONCEPT PLAN

The purpose of the Legume Concept Plan is to provide a strategic direction for future village improvements in order to achieve an environment which provides for the needs of its residents and visitors alike.

The Legume Concept Plan builds on the research and community consultation undertaken by Tenterfield Shire Council and the community of Legume. It identifies the areas that require embellishments in order to create a beautiful, functional and interesting area.

The ideas contained in this plan aim to support the village of Legume as an attractive and appealing area. With future improvements to Legume Village it is envisaged more visitors to the region will stop and explore all that it has to offer and create a sense of community pride and ownership of the public spaces within the village.



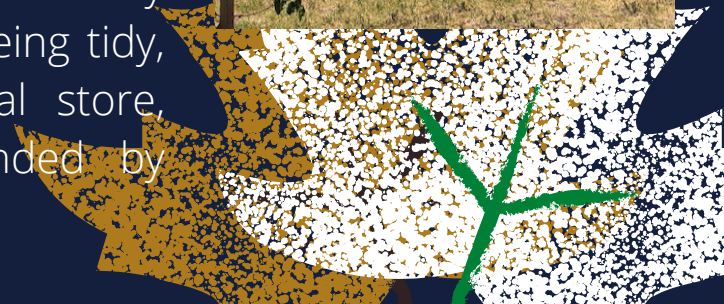
OUR STORY

Country hospitality, small village charm and natural wonders abound in the village and surrounds of Legume located 94 km north east of Tenterfield along the Mount Lindesay Road. Legume is 161 km south west from Brisbane and 763 km from the NSW state capital of Sydney. There are just over 150 people residing within Legume village.

Legume is situated on the traditional land of the Bundjalung. Council pays respect to the past, present and future Traditional Custodians and Elders of this nation and the continuation of cultural, spiritual and educational practices of Aboriginal and Torres Strait Islander peoples.

The area is one of Australia's finest producers of beef cattle and the rich red soil of Acacia Plateau produces some of the best potatoes and kiwi fruit in the country, not to mention the incredible views from the top of the plateau.

Legume is only 10 minutes from Killarney which is located just over the Queensland border. Even though Legume is a tiny village the community pride themselves in the village always being tidy, neat and friendly. Legume has a local store, community hall, park and is surrounded by National Parks.

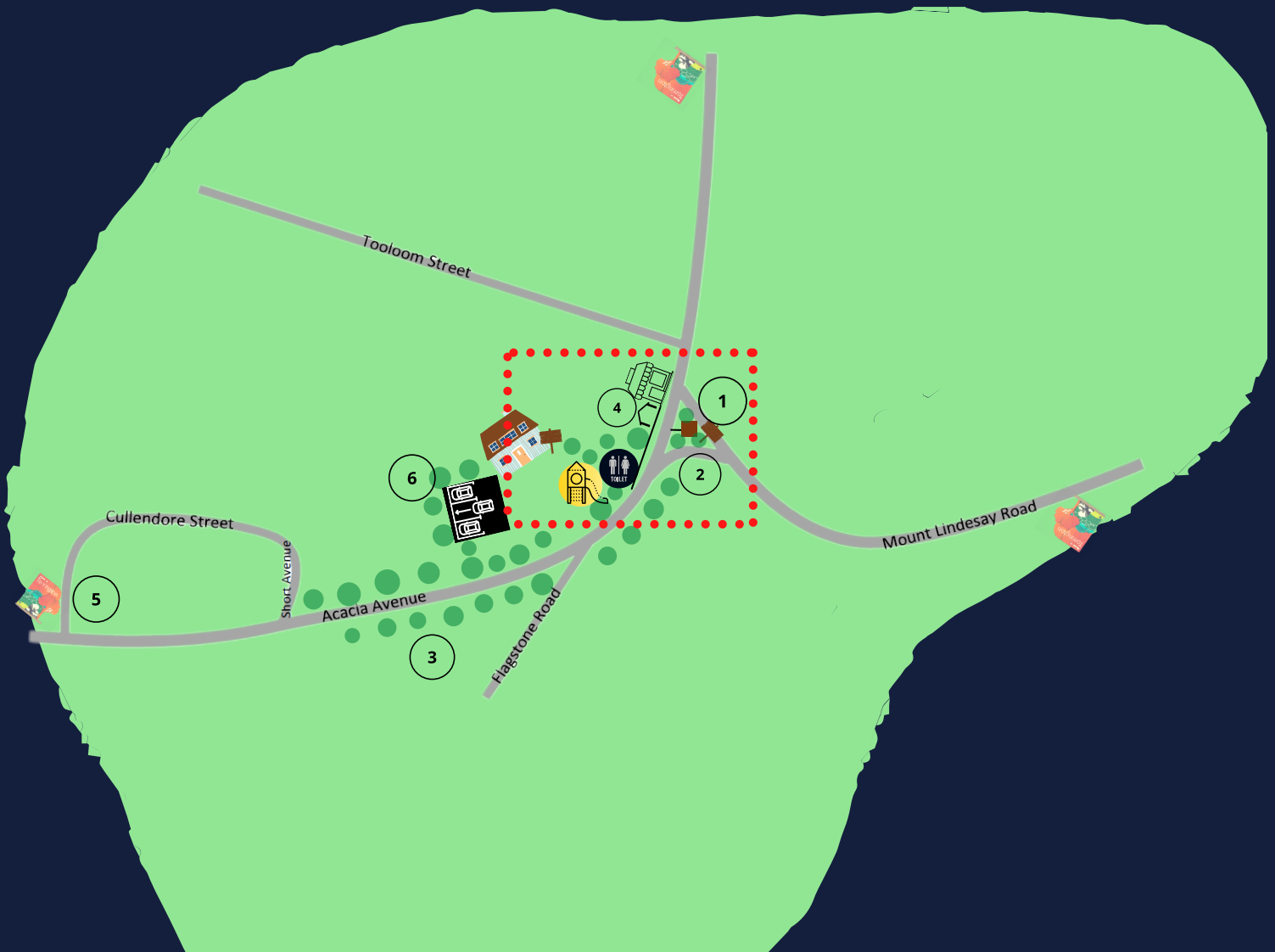


OUR AIM

1. To create a welcoming village centre which reflects the stunning surrounding natural landscape in which it sits.
2. To capitalise on day trip visitation by promoting things to see and do and creating an attractive tourism trail around the village.
3. To recognise and actively develop the cultural strengths and unique heritage of the village and surrounds.
5. To establish a community spirit which encourages a quality lifestyle, supports health and social well-being, promotes family life and lifestyle choices.



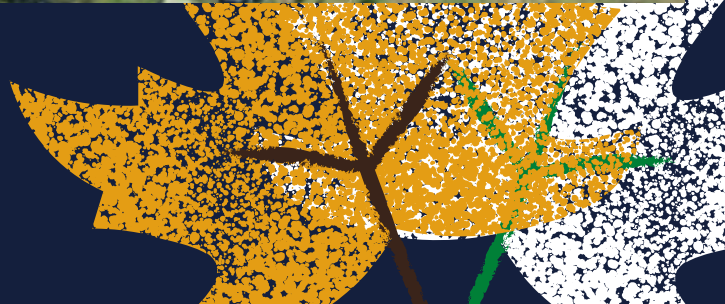
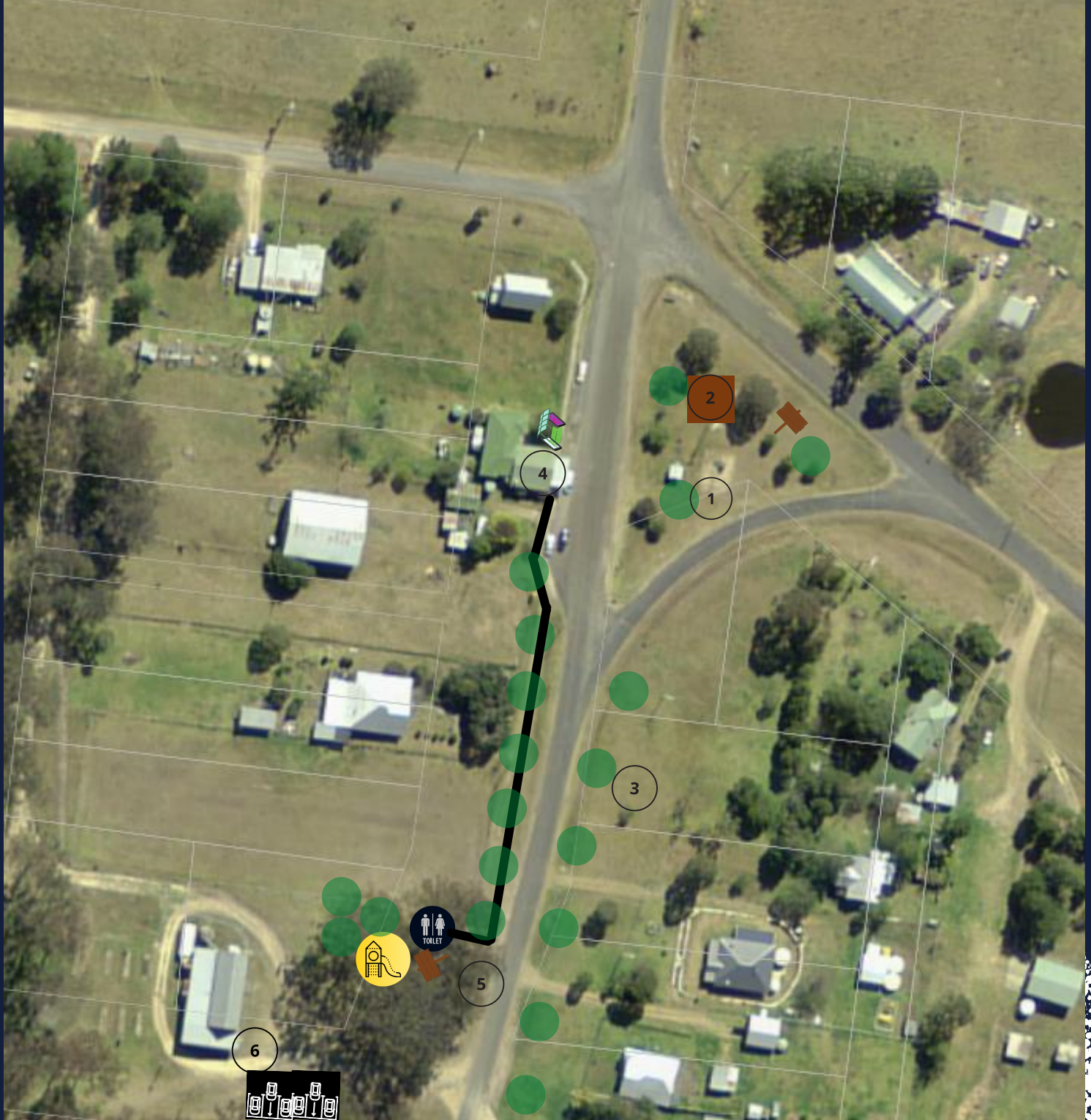
OUR VISION



- 1 Proposed gardens throughout the park area
- 2 Covered BBQ area with seating
- 3 Tree Plantings along Acacia Avenue
- 4 Construct bus shelter near local store & a footpath from the bus shelter to the public toilets
- 5 Interpretative Signs throughout the village
- 6 Proposed car park to hall, toilets and playground



MAIN AREA CONCEPT PLAN



KEY ACTIONS FOR LEGUME



Create a welcoming setting within the village



Install Interpretive Signs



Improvements to public spaces



Improve parking facilities for public areas





COMMUNITY CONSULTATION

The community of Legume were invited to brainstorm ideas and issues for the future of the village centre. The information package was sent to the Legume Progress Association on 20 August 2020. Staff at Tenterfield Shire Council also have viewed the draft plans and included future works into the plans.

Residents have prioritised the following ideas for improvements:

- 1 Proposed gardens throughout the park area – to include picnic tables and electric barbeque facilities.
- 2 Proposed tree planting – using suitable species and size for the Legume area
- 3 Proposed bus shelter replaced with picnic table
- 4 Proposed car park to service hall and new toilet amenities
- 5 Bus shelter erected at dedicated school bus stop on northern side of Legume Store
- 6 Footpath from Legume Store to new public toilets and playground facilities



PUBLIC OPEN SPACE

Tenterfield Shire Council in conjunction with the Legume Progress Association are seeking to identify future works to revitalise the village through the following projects;

- Upgrade the gravel car parking area
- New playground and toilet facilities
- Seating and a covered BBQ area
- Constructing a bus shelter near the Legume Store



LINKAGES

Footpaths facilitate two primary groups of activities; moving activities and stationary activities. Good footpath design with suitable materials and furniture can successfully cater for both.

- Increased safety for pedestrians.
- Improves facilities for pedestrians (improves accessibility).
- May help to increase walking as a mode of transport (environmental benefits).
- Walking can improve health and fitness.

Footpath from the toilets and playground facilities to the Legume Store will provide separation from local traffic, accessibility, increased use of both spaces, and most importantly link the two spaces together.

Restoration of the footbridge/road edge into the Legume park along Mt Lindesay will provide a safe access to the proposed BBQ area.



LANDSCAPING



- Proposed tree planting along the proposed footpath.
- Proposed tree planting around the playground and toilet area to provide a more welcoming and shaded space to visit.
- Planting trees around the car park and hall to provide shade for vehicles and link the toilets, playground, hall and carpark facilities together.
- Construct a covered BBQ area with seating in Legume park will provide a meeting place for the residents and visitors.



TOURISM

When visiting Legume you can take a drive through the rainforest to Urbenville and Woodenbong via Tooloom Lookout, which presents breathtaking views of the surrounding countryside.

Legume also offers the best point from which to explore Koorah National Park, as well as part of the World Heritage Gondwana Rainforests, and, just over the Queensland border, Queen Mary Falls is a must see.

Ways to promote Tourism

- Develop an updated tourism brochure that would engage visitors and promote places of interest.
- Work with National Parks
- Include in advertising campaigns - showcasing the fascinating history and spectacular bush landscapes.



IMPORTANT INFORMATION

MOVING FORWARD

A range of village improvements have been proposed for Legume responding to ideas raised during analysis and in consultation with the community. Legume has a passionate and engaged community and presents itself as a great place to live and to visit. Low cost improvements include footpath, trees planting and interpretative signage. Higher cost items include car parking area and covered BBQ area.

The Legume Concept Plan will provide a blueprint for future village improvements and a focus for improving the functioning and aesthetics of the village as funds and resources become available.

The Concept Plan acts as a valuable tool in seeking funding for the projects identified in to the future

Proudly funded by



CONTACT

Tenterfield Shire Council

247 Rouse Street
(PO Box 214)
TENTERFIELD NSW 2372

Phone: 02 6736 6000

Email: council@tenterfield.nsw.gov.au

Website: www.tenterfield.nsw.gov.au

