

VILLAGE CONCEPT PLAN

*Step out of your
imagination and into the
unspoilt beauty of
Tenterfield Shire
It's humble....
It's authentic...
It's True.*



LA
LOOL
MING



CONTENTS



PURPOSE OF THIS CONCEPT PLAN.. 3

OUR STORY 4

OUR AIMS 5

OUR VISION 6

MAIN AREA CONCEPT PLAN7

KEY ACTIONS FOR MINGOOLA 8

COMMUNITY CONSULTATION 9

PUBLIC OPEN SPACE 10

LINKAGE 11

LANDSCAPE 12

TOURISM 13

IMPORTANT INFORMATION 14

PURPOSE OF THIS CONCEPT PLAN

The purpose of the Mingoola Concept Plan is to provide a strategic direction for future improvements in order to achieve an environment which provides for the needs of its residents and visitors alike.

The Mingoola Concept Plan builds on the research and community consultation undertaken by Tenterfield Shire Council and the community of Mingoola. It identifies the areas that require embellishments in order to create a beautiful, functional and interesting area.

The ideas contained in this plan will also support Mingoola as an attractive and appealing locality. With future improvements it is envisaged more visitors to the region will stop and explore all that it has to offer.



OUR STORY

Mingoola is a small locality in New South Wales, located near the Queensland border, surrounded by natural attractions, wineries and agricultural landscapes, with the population now only approximately 20 people.

Mingoola is situated on the traditional land of Kamilaroi. Council pays respect to the past, present and future Traditional Custodians and Elders of this nation and the continuation of cultural, spiritual and educational practices of Aboriginal and Torres Strait Islander peoples.

Located 57km west of Tenterfield and 714 km north west of the state capital of Sydney, Mingoola was once a major tobacco growing area with many relics of this era still visible.

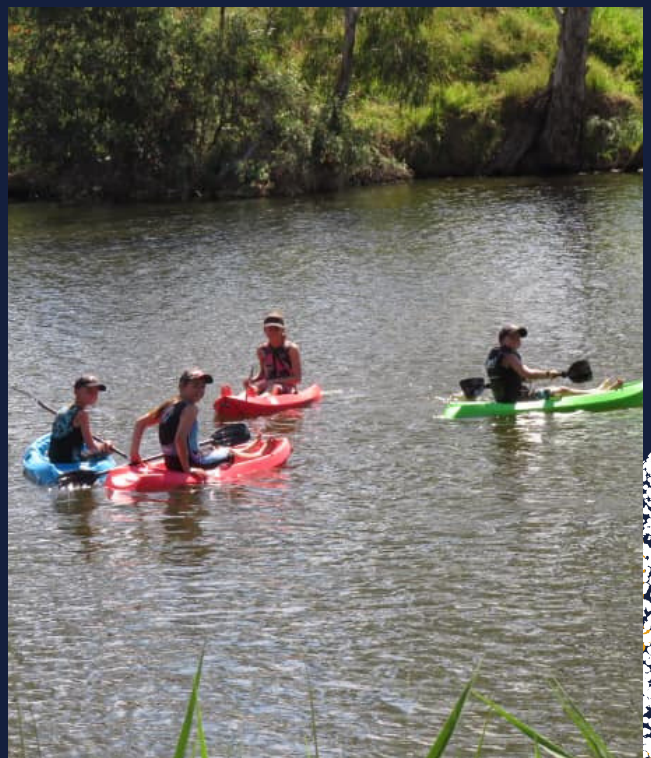
The industry transformed the area in to the cultural melting pot it is today, as Maltese, Italian and Spanish immigrants moved to the area to share-farm tobacco, and provide seasonal labour for the crop. Many of these immigrant families later bought their own farms and settled permanently in the area.

Recently Mingoola had a program for pioneering refugee resettlement from Africa to live and work in Mingoola before the severe drought affected the program.

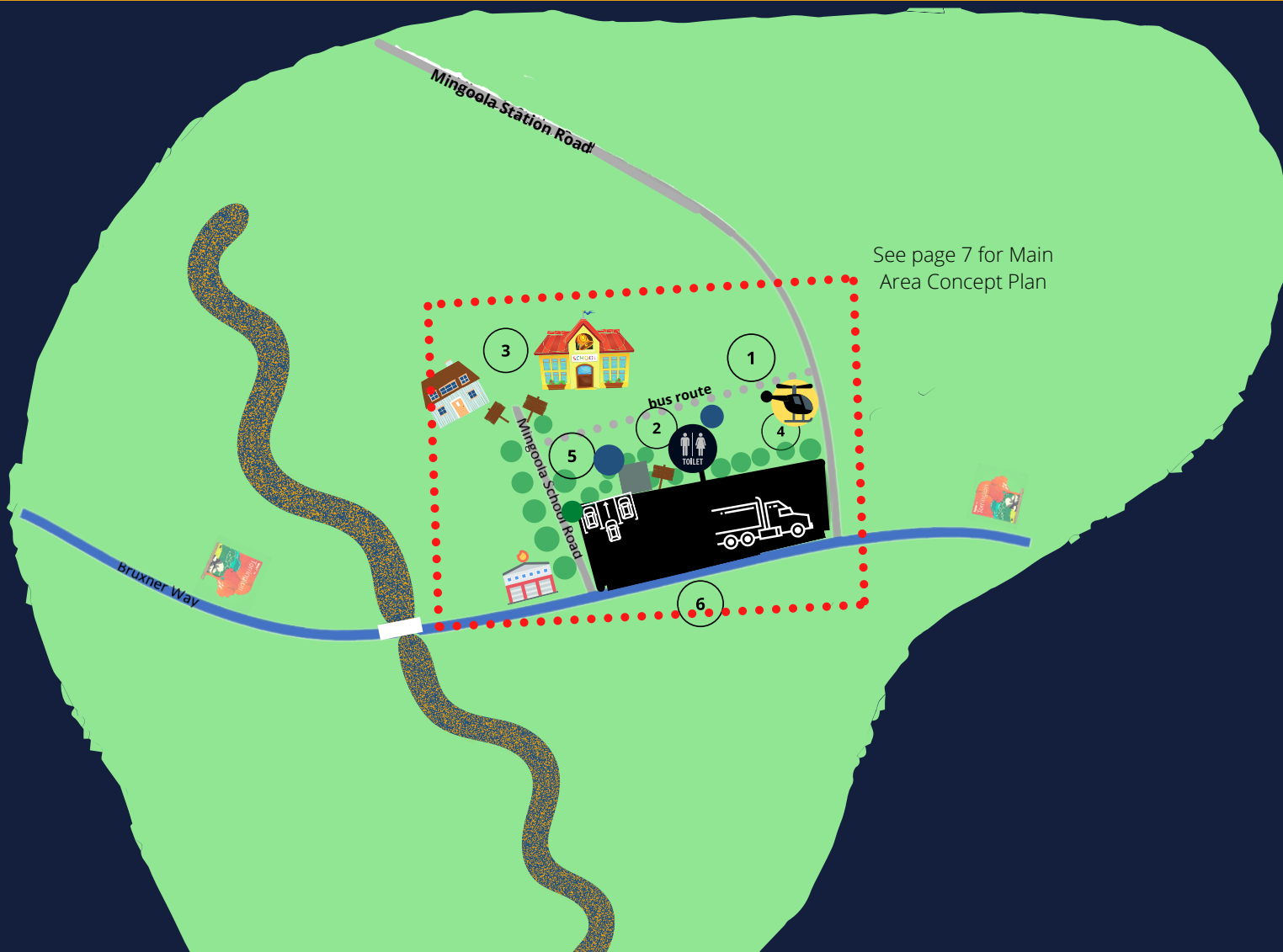


OUR AIM

1. Create a welcoming locality which reflects the stunning surrounding natural landscape in which it sits.
2. Capitalise on day trip visitation by promoting things to see and do.
3. To entice people to stop and rest while taking in the spectacular scenery and history Mingoola has to offer.
4. To recognise and actively develop Mingoola's cultural strengths and unique heritage
5. To establish a community spirit which encourages a quality lifestyle, supports health and social well-being, promotes family life and lifestyle choices.

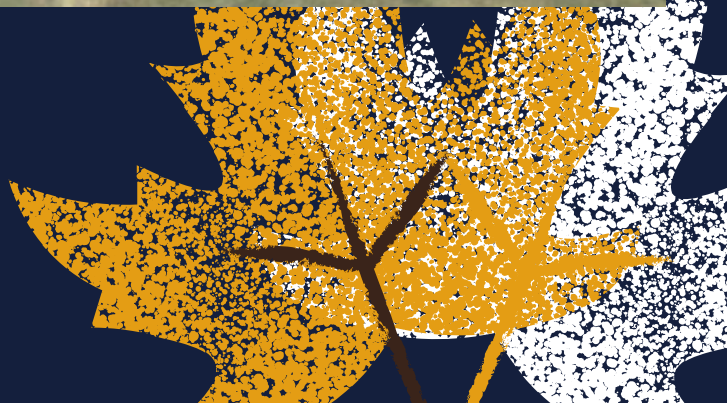
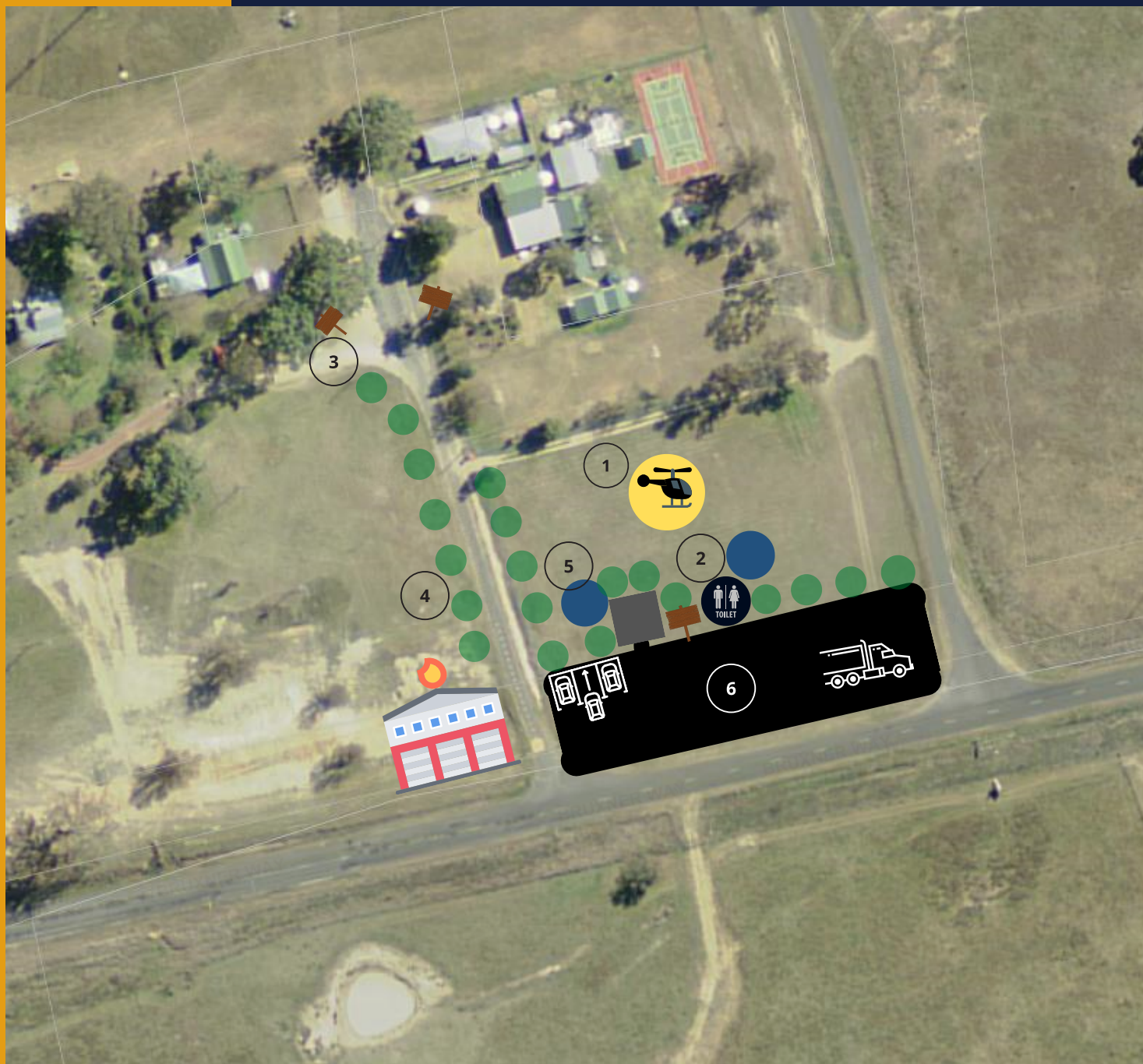


OUR VISION



- 1 Install helicopter landing area
- 2 Construct 2 unisex toilets 1 with a Shower & undercover BBQ and seating area with bin
- 3 Heritage interpretative panels throughout the parking space
- 4 Tree planting along Mingoola School Road and Parking area
- 5 Install tanks to service the toilets and BBQ area
- 6 Construct a public parking area and truck Rest Area along Bruxner Way

MAIN AREA CONCEPT PLAN



KEY ACTIONS FOR MINGOOLA



Create a welcoming setting within the village



Improvements to the Community Hall



Create Interpretative Signs



Improve parking facilities for public rest areas





COMMUNITY CONSULTATION

The community of Mingoola were invited to brainstorm ideas and issues for the future of Mingoola. The information package was sent to the Mingoola Progress Association on 20 August 2020. Staff at Tenterfield Shire Council also have viewed the draft plans and included future works into the plans.

Residents have identified the following:

1. An identified helicopter landing area for emergencies.
2. Toilet block located in front of school or hall
3. Undercover seating and BBQ area close to Community Hall
4. Visitor Information/Interpretive Signage located in front of School
5. No desire for playground
6. Truck Bay to be located adjacent to Bruxner Way and install public bin
7. Car parking to be located along Mingoola School Road

PUBLIC OPEN SPACE

Tenterfield Shire Council in conjunction with Mingoola Progress Association are seeking to identify future works including;

- Public toilets for visitors using the Truck Rest Area and the proposed Car parking area. Mingoola is a remote locality from any village or town the rest areas and toilets are an important asset to the area for anyone needing to pull over and recover from the long drive.
- Providing an undercover BBQ area with seating. This will not only provide the community a location to meet up but will also provide visitors to the area a more inviting setting to stop, revive and rest for the drive ahead.



LINKAGES

Footpaths facilitate two primary groups of activities; moving activities and stationary activities. Good footpath design with suitable materials and furniture can successfully cater for both.

- Increased safety for pedestrians.
- Improves facilities for pedestrians (improves accessibility).
- May help to increase walking as a mode of transport (environmental benefits).
- Walking can improve health and fitness.

Footpath from the proposed car/truck park to toilets will provide accessibility, and most importantly link the two spaces together.

Installation of a helicopter landing area will provide a position for Westpac Helicopter to perform life saving flights to a rural community



LANDSCAPING



- Proposed tree planting along Mingoola School Road
- Proposed tree planting and appropriate gardens around the BBQ Area, to provide a welcoming space to visit
- Planting of shade trees around the car parking and truck rest area will provide natural shelter.
- Installation of Heritage/Interpretive signs, located on the land in front of the public school



TOURISM

In more recent years, Mingoola has become a wine and pecan producing area. In the locality visitors can enjoy hiking, mountain bike, cycling and 4WD trails, water views at National Parks and explore the relics and abandoned mines from the 1870s mining boom.

Glenlyon Dam is 16km from Mingoola and is a popular water sports location, with a tourist park for those wishing to stay overnight. It is also a great fishing spot, with Murray Cod, Yellowbelly, Silver Perch, Spangled Perch and Eel-tailed Catfish, all calling the dam home.

Ways to promote Tourism

- Develop an updated tourism brochure that would engage visitors and promote places of interest.
- Work with National Parks
- Include in advertising campaigns - showcasing the fascinating history and spectacular bush landscapes.



IMPORTANT INFORMATION

MOVING FORWARD

A range of improvements have been proposed for Mingoola responding to ideas raised during analysis and from the community. Mingoola has a small but lively community and presents itself as a great place to live and to visit. Low cost improvements include footpath, trees planting and interpretative signage. Higher cost items include car parking area, toilet facilities and Rescue Helicopter landing area.

The Mingoola Concept Plan will provide a blueprint for future village improvements and a focus for improving the functioning and aesthetics of the area as funds and resources become available.

The Concept Plan acts as a valuable tool in seeking funding for the projects identified in to the future.

CONTACT

Tenterfield Shire Council

247 Rouse Street
(PO Box 214)
TENTERFIELD NSW 2372

Phone: 02 6736 6000
Email: council@tenterfield.nsw.gov.au
Website: www.tenterfield.nsw.gov.au

Proudly funded by

