

TENTERFIELD SCULPTURE WALK

Regional Tourism Bushfire Recovery (RTBR) Funding

Stream 2060 – Art Installations Tenterfield Creek

Tenterfield Sculpture Walk

3rd March 2021

OVERVIEW

On 9th November, 2020, Make It Tenterfield entered into a grant agreement with Tenterfield Shire Council. Make It agreed to install five Art Installations along the Tenterfield Creek Walking Track. Information boards to match those along Rouse Street will be placed with each installation, providing information on the Artwork and the community group for which that artwork has been designed.

The project will be designed and coordinated by the Sculpture Walk Committee, a specially formed group within Make It Tenterfield.

Grant funding will cover the costs associated with the project. These costs include Project Management fees, Preliminaries, Community Consultation, Design, scope of work, Advertising, e.g. social media, local paper. The funding also covers Video Documentation, Installation and Logistics, materials and equipment, design and construction.

Details of the Grant Agreement can be viewed in the Reference section.

The Tenterfield Creek Walking Track area included in this project extends from Millbrook Park to the West, and terminates across from the Catholic Church and above the Showground.

GOALS

The unique history of Tenterfield and its community features largely in the design of all elements to be included in this project.

While providing a modern and dynamic sculpture walk intended to enhance the existing creek walk and provide points of interest, we have also focused on recognizing important elements of Tenterfield's unique and significant legacies.

We will achieve this by linking each Artwork to a current Community Group. The Groups included are –

- ❖ The Tenterfield Light Horsemen

- ❖ The Country Women's Association of Tenterfield

- ❖ The Tenterfield Horticultural Society

- ❖ Centennial Cottage Heritage Group

- ❖ Tenterfield Land Council

TIMELINE

Project Commencement – Monday 9th November 2020

The funding deed requires completion no later than 30th March 2022.

MAINTENANCE, PUBLIC SAFETY AND DURABILITY

Maintenance, public safety and durability will be carefully considered during the design, manufacture and installation of all sculptures.

There will be no moving parts in any of the designs.

There will be no sharp points or edges.

Where appropriate, a cement base will be included to allow easy mowing.

Materials will be selected for their easy maintenance and durability.

All sculptures will be located at a safe distance from playing fields and roadways.

Consideration of flood zones and also periodic high floods will be taken.

Locations will be selected with the least flood exposure in mind, as will the materials used, the method of installation and the sculptural design of each artwork.

It is our intention that these artworks are built to last and we will do our best to achieve that result.

We understand that all installations will require prior discussion with Mark Cooper, manager of Council's Open Space, Regulatory and Utilities.

We also understand that each artwork must be approved by Tenterfield Shire Council prior to installation.

Make-It Tenterfield will ensure that all activities undertaken in regards to the Sculpture Walk Project will adhere to all government regulations in regards to social distancing. Any costs incurred in implementing these regulations will be covered by Make-It Tenterfield.

SCULPTURES

As stated above, each sculpture is linked to a group. Make It Tenterfield and the Tenterfield Shire Council have collaborated in Community Meetings with each group, and also associated groups. Make It has followed up these meetings with several discussions regarding each attributed sculpture. All associated groups have been shown designs and been invited to participate in the design process and to provide information and photos that they wish to have included in the notice-boards. The outcome of these community consultations is that each group has expressed their joint satisfaction with the relative sculpture design.

Make-It Tenterfield understands that all artwork, notice boards and any other installations, including seating, will require approval by Tenterfield Shire Council prior to installation. We also understand that all locations need to be discussed with Mark Cooper.

Please Note:

Although our agreement states that the locations should be on the walking track between Rotary Park, and finish at Jubilee Park, we would like to request that the Council's Open Space Regulatory and Utilities body and the Tenterfield Shire Council consider amending this part of the agreement to allow for the use of a location in Millbrook Park. The reason that this amendment is requested is as follows –

The Land Council Sculpture has been designed to be seen from a distance, and to function as a venue for smaller events and meetings. Being five meters high, and covering an area of twenty-one square meters, Millbrook Park offers the perfect location. In this position the sculpture will be seen by all passing traffic on Rouse Street, have parking and access for meetings and small events, will have a clear space free of trees, and access to public toilets, and an open flat area.

Zara Stone has met with Mark Cooper at the location. Mark has viewed both the model for the project and viewed the exact location proposed.

The Horse Sculpture –

Miles Street Park

Light Horsemen Tenterfield

This statue has been designed to portray the courage and strength which is the spirit of the Tenterfield Light Horsemen.

Standing 3.6 meters tall, at one of the highest points of the walk, this artwork will be dynamic and eye-catching.

Being the second largest of the installations, this sculpture will be the Southern gateway to the Sculpture Walk.

The materials used will reflect the strength of the design, conveying the proud nature of the Light Horse.

Name of Installation – Ode to Beersheva

Associate Group - Light Horsemen Tenterfield

Materials -

- Corten Steel Sheet
- Internal steel tube framework
- Concrete base

Dimensions –

Height - 3.6 meters

Length – 2.85 meters

Width – 1.2 meters

Location –

Park area in the corner of Miles and Crown Street.

The sculpture will be positioned close to the point where the Creek Walk meets Miles Street.

It will be to the left of the Catholic Church, from the Church perspective.

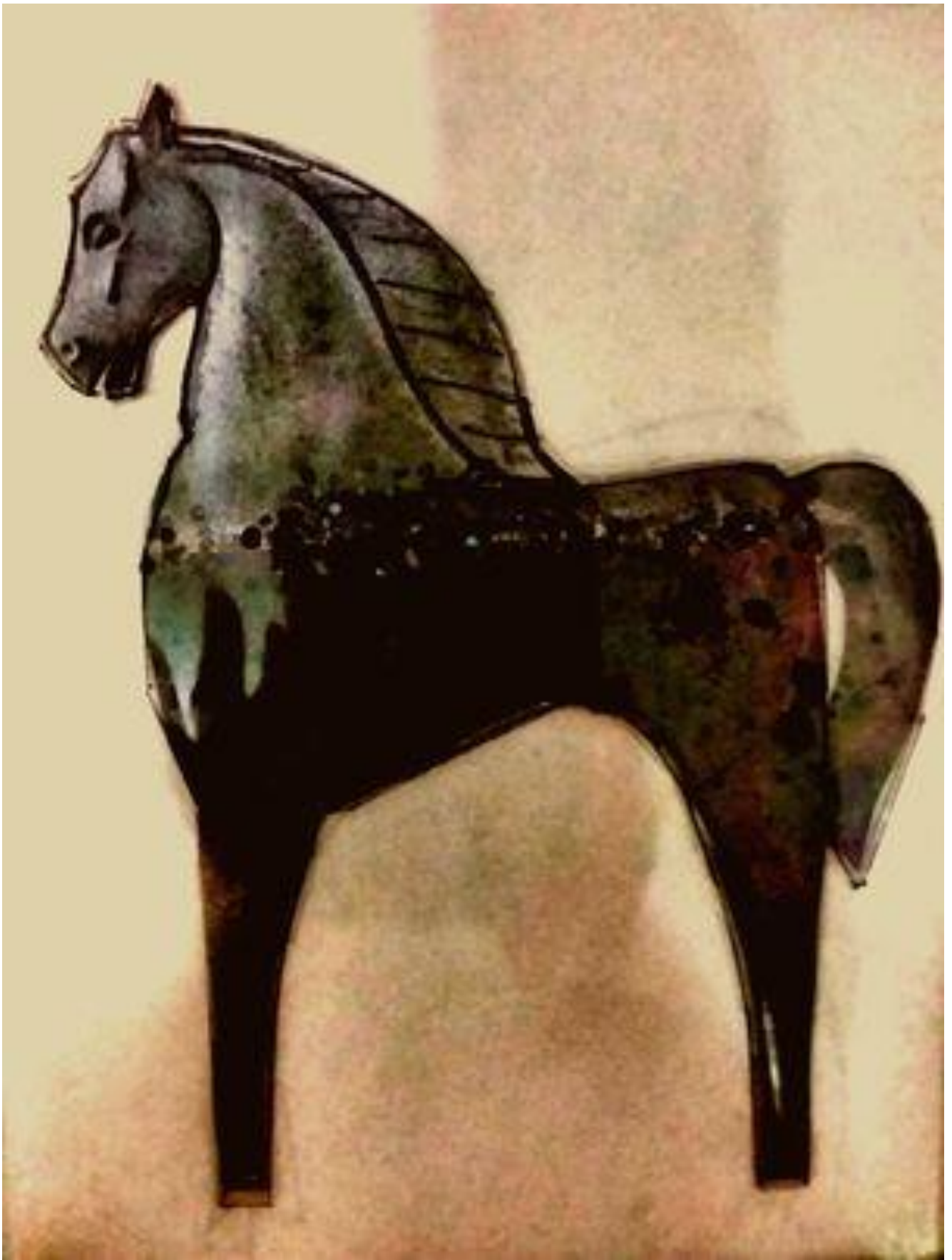
Due to the rocky nature of this location the decision on the precise location will be determined following the engineers inspection of the site.

We are aware that the area along Miles and Crown Street maybe used for nose-in parking in the future. We see no problem with this and will make sure that the statue is no closer than 5 meters to Miles or Crown Street.

The height of this area and the central location make it perfect for this tall and grand statue.

The Engineer –

Darrell Campbell
DDC Engineering Pty Ltd
46 Industrial Avenue
Toowoomba Qld



The Horse Sculpture – Miles Street Park



Corner Miles and Crown Streets
 Diagonally Opposite Catholic Church
 20 meters in from Miles Street
 60 meters in from Crown Street

Woman with Flowers Mosaic – Jubilee Park

Tenterfield Horticultural Society

Farming and Horticulture have been one of the foundations of Tenterfield history. The sculpture will pay homage to this history.

A colorful female figure standing in a field of flowers, her hands holding a basket of fruit, will be formed in vibrant ceramic mosaic. The artwork will be supported by an engineered steel internal frame, encased with a silicon impregnated cement, and surfaced with high quality ceramic tiles. The accompanying information board will convey the history of both the Horticultural Society in Tenterfield and reference Tenterfield horticultural heritage.

Name of Installation – Bloom

Materials -

- Ceramic Tile Exterior
- Concrete Structure with Latex additive
- Internal steel framework
- Steel Mesh underlay
- Concrete base

Dimensions -

Height - 1.6 meters

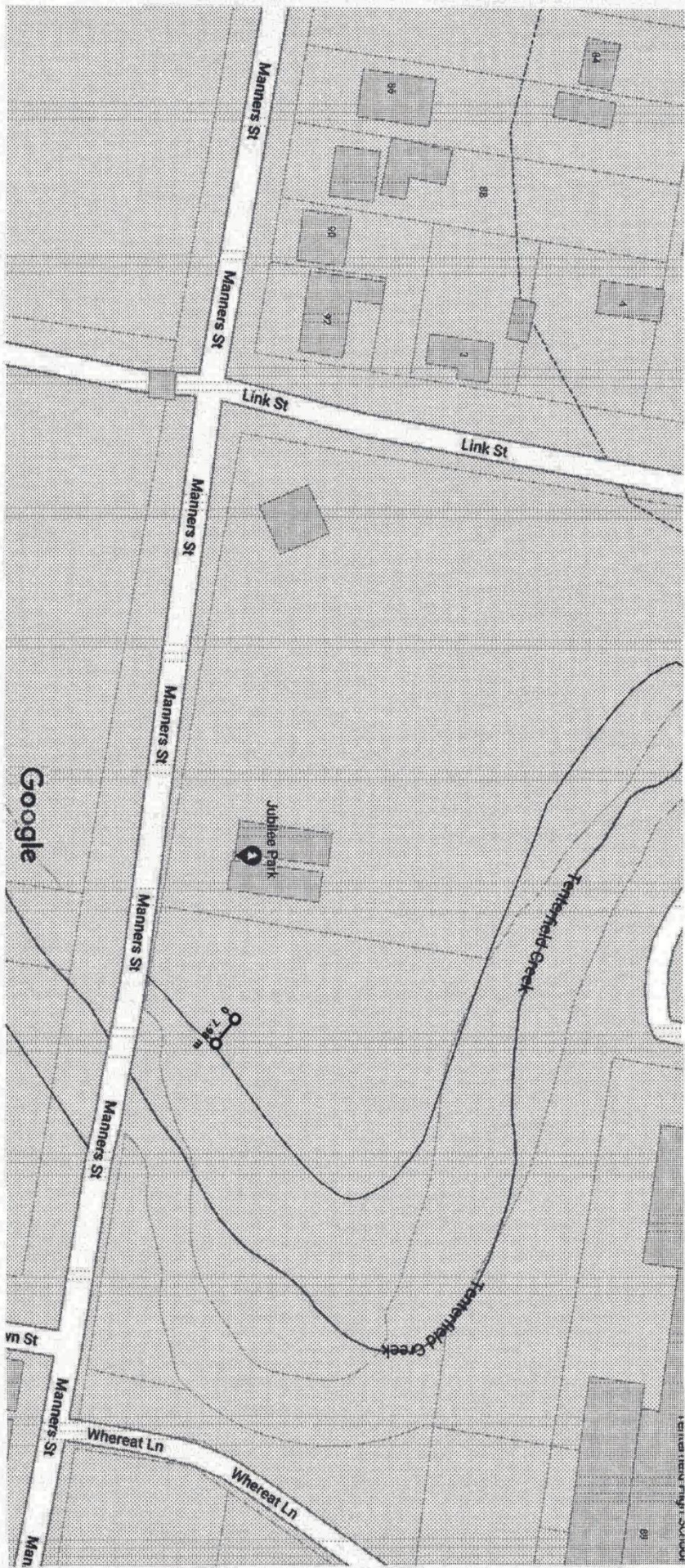
Length – 1.0 meters

Width – 1.0 meters

The Engineer -

Darrell Campbell
DDC Engineering Pty Ltd
46 Industrial Avenue
Toowoomba Qld





Map data ©2021 20 m

Colonial Verandah –

Bowling Club Park Area

Centenary Cottage Association

This sculpture/installation will be created to provide a point of rest and shelter from both sun and rain along the Sculpture Walk. The essence of a Colonial Vertical Timber Slab Cottage will be created through the construction of a hardwood, steel-framed fascia, with a timber verandah and a tin roof, supported on rough hewn hardwood posts. A hardwood bench on either side of a doorless doorway, will provide a venue where visitors can stop and re-live a nostalgic time on the verandah, gazing on a scenic creek view. The rear of the sculpture will also be clad, and the doorway will feature a tin hood, appropriate for a back door exit. This will allow the sculpture to be viewed equally from either side.

To one side of the cottage will extend a section of rustic post and rail fence.

Name of Installation – A Quiet Time

Materials –

- Hardwood Roughhewn Slabs
- Steel Frame
- Corrugated Iron Roof
- Concrete Slab Base for Verandah
- Hardwood Timber Decking
- Hardwood Posts
- Original Post and Rail Fence section
- Hardwood Timber Benches

Dimensions –

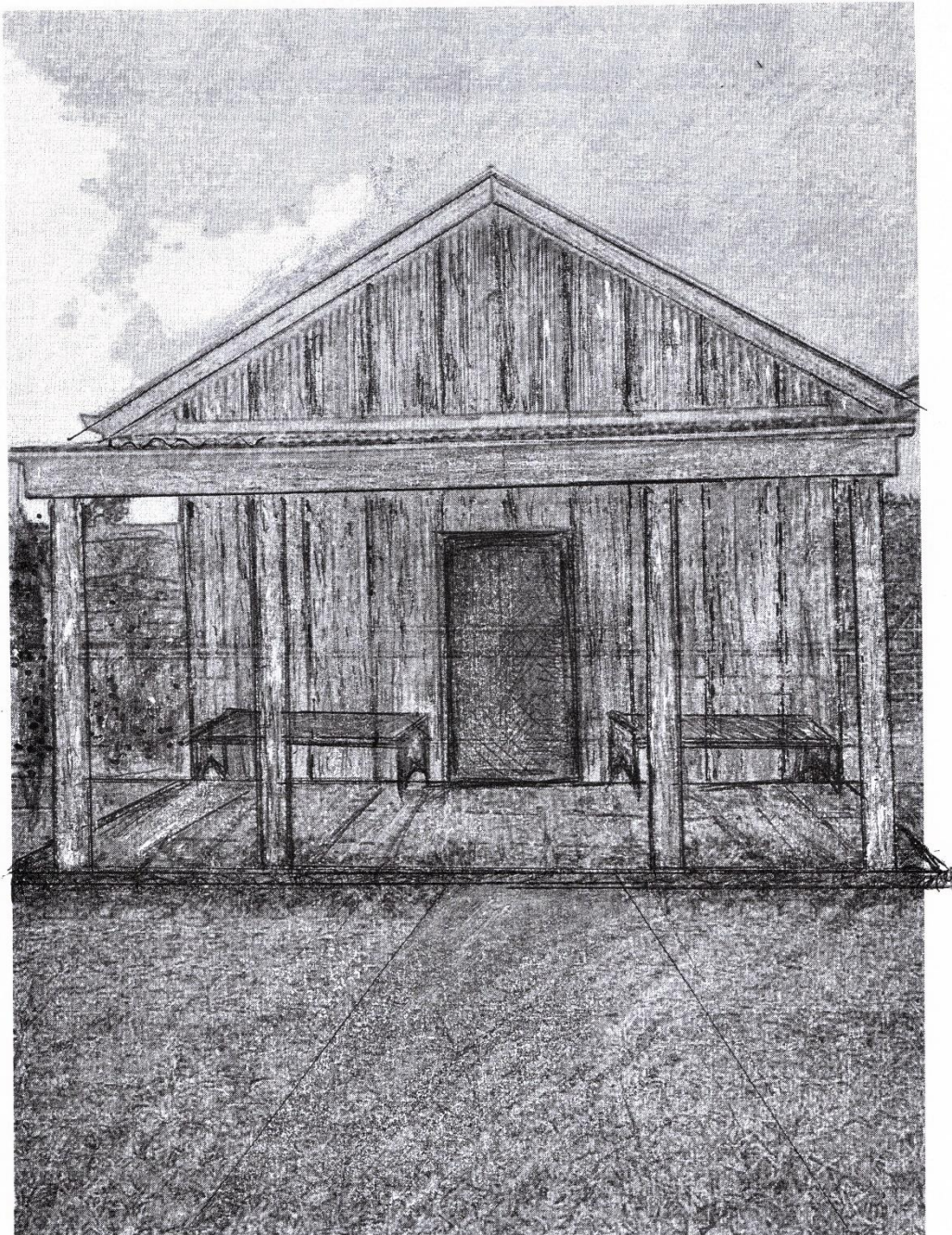
- Height - 2.4 meters
- Length – 2.4 meters
- Width – 1.4 meters

Location –

Bowling Club Park (1.5 m from pathway)

Builder-

- Brian Smith**
- B.J.F. Construction
- Tenterfield



Colonial Verandah – Bowling Club Park Area



Bowling Club Park Area
One meter from Pathway on the Bend
29 meters from end of High Street Overpass

Cow and Border Collie

Rotary Park near Scott Street

– Country Women’s Association

This sculpture has been designed both for its relevance to Tenterfield’s agricultural history, and for its appeal to a younger audience. Two Corten steel silhouettes, a cow and a working Border Collie will be seen to interact, standing at a short distance facing each other against the backdrop of a green grassy lawn. The sculpture has been designed in consideration of the values of the Country Women’s Association, which was established to take care of the needs of women and children in the community.

Name of Installation – Who’s the Boss

Materials-

Corten Steel

Steel frame

Concrete base

Dimensions –

Height – 1.6 meters

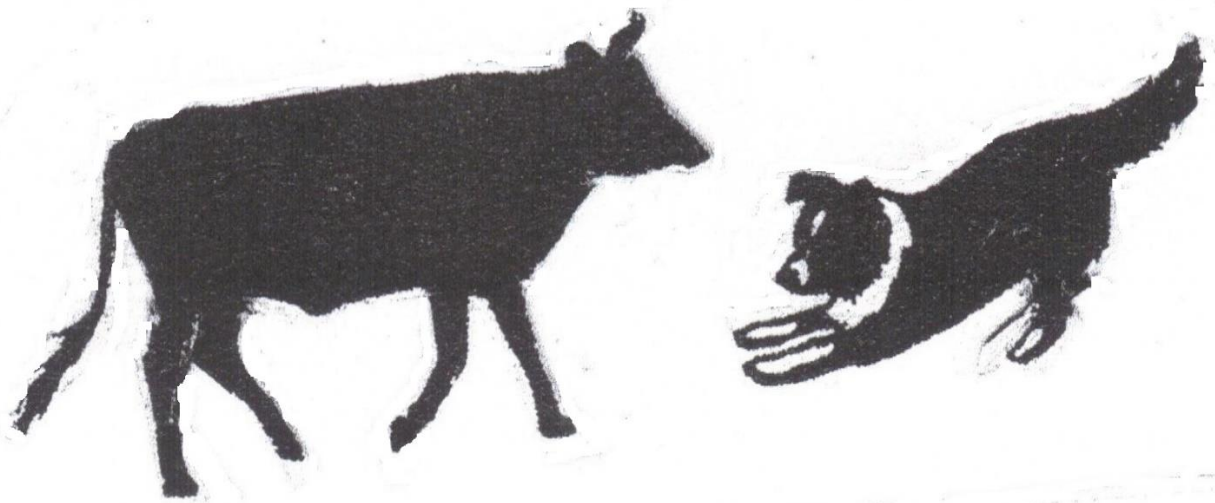
Total Length of Installation – 2.3 meters

Location –

Rotary Park (Cnr Scott and Martin Streets)

Engineer

Darrell Campbell
DDC Engineering
Toowoomba



Cow and Border Collie

Rotary Park - Corner of Scott and Martin Streets



9 Meters from Park Bench
2.7 meters from the Walking Path

Speaking Poles –

Millbrook Park

Aboriginal Land Council

This sculpture has been designed as the northern gateway to the Sculpture Walk. Five Corten steel poles, each standing five meters high, will represent five language groups, directly connected to Tenterfield. The top section of each pole will be wrapped with a cylindrical laser cut alloy artwork. Each artwork will be provided by a selected artist from each language group represented.

The poles will be erected approximately two meters apart and will form an irregular organic passageway. At the far end will be a semicircle of flat-topped granite boulders suitable for seating. The semicircular shape traditionally represents a meeting place. At the far end will be an information board. This board will contain photos and information relevant to each language group and elements will be written in two languages.

This venue is intended to be an awe-inspiring artwork, and to serve as an outdoor venue for smaller events. It is intended that it be incorporated into the Tenterfield Sound Scape, at which point the Poles will emit digeridoo sounds and language.

Materials -

- Corten Steel
- Alloy plate
- Granite Rock
- Concrete

Dimensions -

Overall Area of installation - Poles and Granite Semi-circle

- Width 3 meters
- Length 7 meters
- Height 5 meters

Corten Poles –

- Width 324 mm (+standoff brackets welded to pipe)
- Length 5 meters (+1 underground)
- Height 5 meters

Alloy Artwork –

- Width 424 mm
- Height 1.2 meters

Engineer – for poles and installation

Darren Butler
DTB Fabrications
Tenterfield

Engineer - for Artwork

Darrell Campbell
DDC Engineering
Toowoomba

Granite Semi-circle –

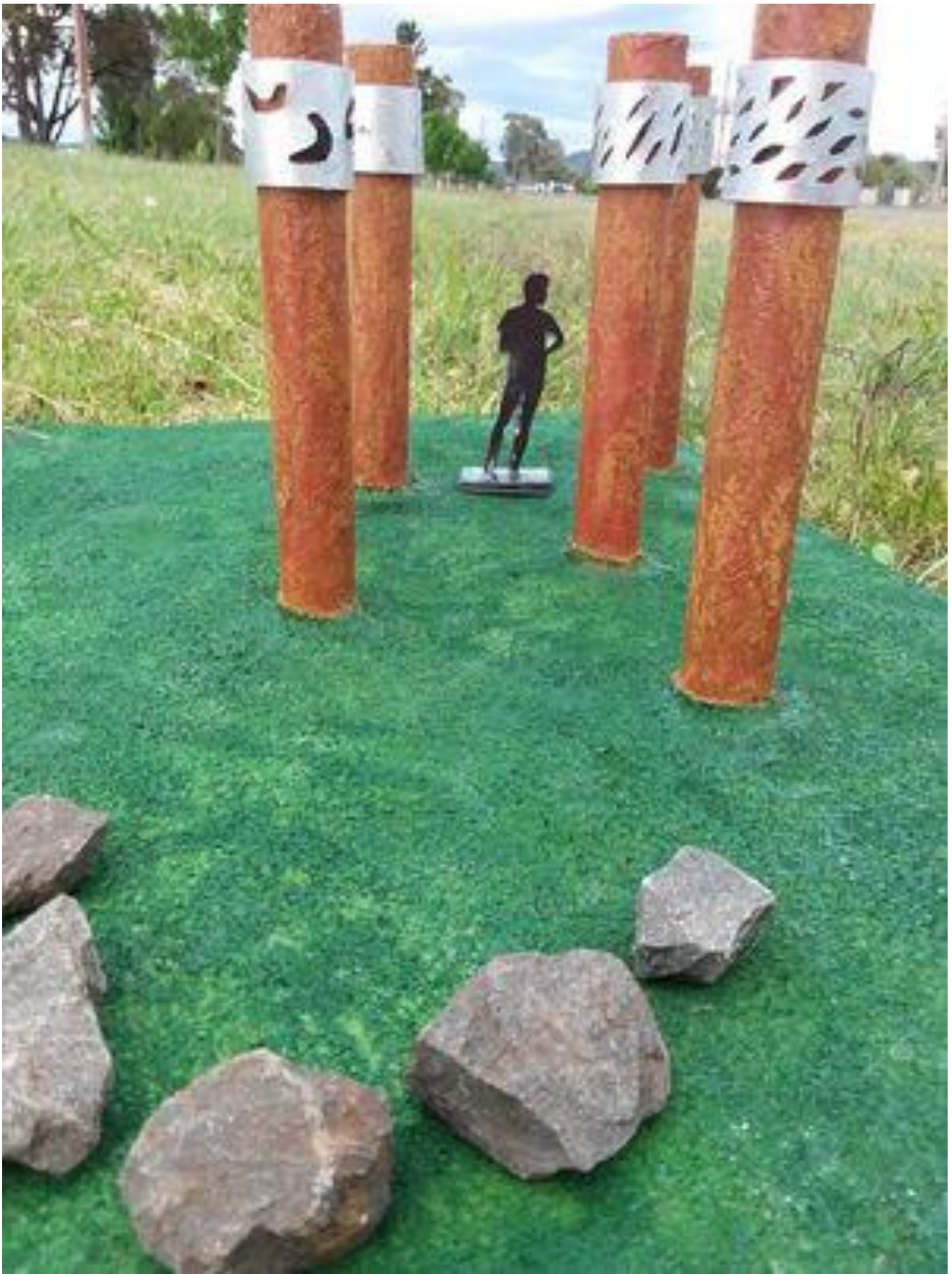
- 2 boulders approximately 400mm width x 300mm height
- 2 boulders approximately 500mm wide x 400 high
- 1 boulder approximately 600mm wide x 500mm high
- Overall area 500mm wide x 2 meters long x 500mm high

The five language groups represented -

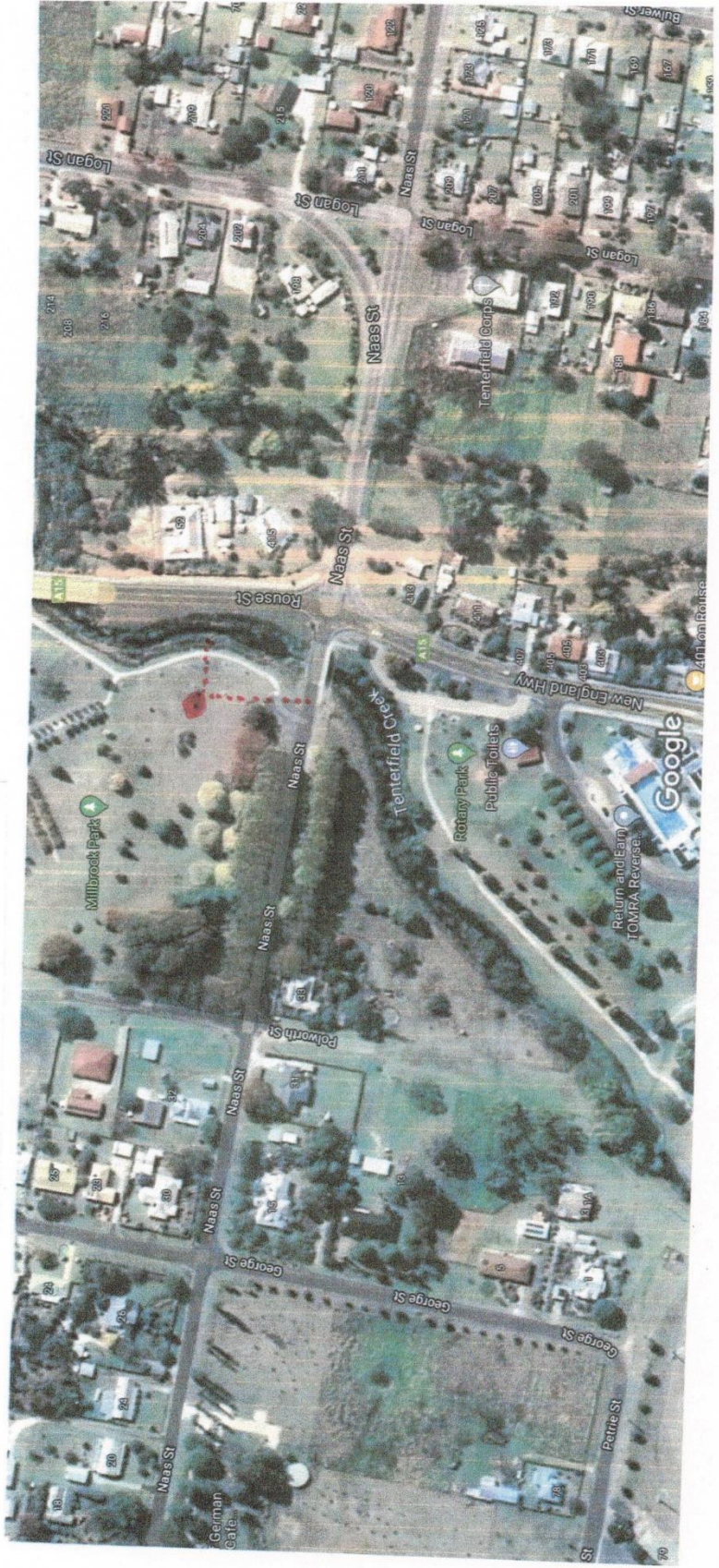
- Githabal
- Jukembal
- Bundjalung
- Kamilaroi
- Ngarbal.

Location

Millbrook Park – Maps with location and distances provided in this report



Speaking Poles – Millbrook Park



Millbrook Park
45 meters in from Nass Street
22 meters in from the pathway

COMMUNITY CONSULTATION

The Five Groups

Committees

Individuals

Community Consultations

We have taken part in extensive community consultation and will continue these discussions and meetings as the project progresses.

We have met with all the groups directly involved and have had individual meetings with interested parties and associations.

In all so far, there have been fourteen formal group presentations, and many more informal individual presentations.

We have had extremely positive feedback so far.

During these meetings we feel we have addressed all concerns. We have adapted our designs, locations, and themes where necessary, in order to acknowledge and remedy the issues raised.

INFORMATION BOARDS

INFORMATION AND PHOTOS

Information Boards

All Information Boards will replicate those used in the main street and will be provided by the same supplier.

Each group represented by the various sculptures has supplied us with both historic photos and relevant text for their boards. The Sculpture Walk Committee will edit and add text where necessary.

There will be a focus on the historical aspects of each group, and a link to the present.

Each board will begin with a description of the associated sculpture, and a statement of the artists intention.

Some text will be in dual language, for example recognition of original custodians.

THE SCULPTURE WALK COMMITTEE

Make It Tenterfield Inc.

The Committee was formed on Friday 4th December 2020

Zara Stone	-	Project Manager
Dianne Rissler	-	Secretary
Ruth Rutherford	-	Treasurer
Erica Hammond	-	Social Media

**Zara Stone –
B Art/Soc.Sci UNSW
Project Manager
Event Producer
Installation Artist
Art Director**



Zara Stone has worked in the Exhibition and Event and industry for over 30 years.

She graduated from the University of NSW in 1999, also studying in Melbourne University and UNSW School of Fine Arts.

Since 1995 she has worked as an Installation Artist and Designer on major corporate projects. She has completed many installations in the Sydney Exhibition Centre, the NSW Museum of Modern Art, the National Gallery of NSW, Homebush Olympic Stadium, and many other prominent venues.

Many of these projects have won important awards and attracted significant media coverage. These projects include -

2002 Breakthrough - the Granville Train Line opening

2003 touring exhibition "Spot the Export" for Austrade Australia
- won Best Educational Project for a Government Department

The Powerhouse Museum Sydney

The Mining Museum, Sydney

The South Sydney Rabbitohs Football Club

The Sydney Swans Football Club

The Sydney Roosters Football Club

And many more

Zara also worked for the Olympic Commission on pre-Olympic projects and events. She produced works for the Opening and Closing Ceremonies for the Olympics at Homebush Olympic Stadium.

Until leaving Sydney, Zara and her company, Ace Props and Events Pty Ltd, was the Royal Agricultural Society of NSW preferred supplier for all pavilion, hall, Trade Stand and other installations. Annually, she designed and installed the theming for

Woolworths Pavillion

International Bazar

The Kids Pavillion

Entertainment and Technology Pavillion

Food and Beverage Pavillion

Gifts and Homewares Pavillion

She was also responsible for the theming of the 800 trade stands, and won many Agricultural Society awards on behalf of her clients. For the Royal Agricultural Society she created, designed and project managed the Colonial Village Walk, consisting of a life-like Colonial Village housing 48 exhibition stands. Her clients on this project included the Australian Royal Mint, NSW Tourism and other important exhibitors.

During her time working as a Producer in Sydney, Zara had a loyal and high profile client base, including the Australian Navy, the Australian Army, Austrade Australia, Clayton Utz, Macquarie Bank, PeopleSoft, Microsoft, American Express, Apple and Toyota. She has worked for well know people including Tony Robbins, Dick Smith Richard Branson. She has produced or designed videos for several well known bands including Silver Chair and Dog Trumpet, and the Rolling Stones concert for Fans at the Enmore Theatre Sydney.

She has produced many events for NSW Councils, and worked closely with Paramatta Council, the Marrickville Council, Cabramatta Council, the East Sydney Council and various Heritage Societies including The Rocks, Sydney and Parramatta.

She has worked on Indigenous projects, and was the co-creator of the Sea-of-Hands project, and the project manager and installation artist for the Sea-of-Hands, Byron Bay NSW. She has also worked for the Bangarra Dance Company Sydney.

Zara has worked as an exhibition Artist in her own right. She has travelled and exhibited in many countries around the world, including India, Italy, Australia, Mexico, Guatemala, Uruguay, Malaysia and USA. She has completed Street Art Projects in some of these countries. Most recently she was an artist included in the Penang Street Art Walk for Georgetown Tourism.

She has completed installations in the Sydney Exhibition Centre, the New South Wales Museum of Modern Art, the Homebush Olympic Stadium, and many other prominent venues.

Zara now resides in Jennings, Tenterfield, and is focusing on both her commercial art projects and her studio work. She is an Abstract Painter, working in acrylics and oils on a large scale. She is a member of 'Make It' Tenterfield, where she exhibits her art.