

VILLAGE CONCEPT PLAN

*Step out of your
imagination and into the
unspoilt beauty of
Tenterfield Shire
It's humble....
It's authentic...
It's True.*



S E N I N E R

This plan was adopted by Council on
25 May 2022 Resolution Number 93/22



CONTENTS



PURPOSE OF THIS CONCEPT PLAN 3

OUR STORY 4

OUR AIMS 5

OUR VISION 6

MAIN AREA CONCEPT PLAN 7

KEY ACTIONS FOR JENNINGS..... 8

COMMUNITY CONSULTATION 9

PUBLIC OPEN SPACE 10

LINKAGE 11

LANDSCAPE 12

TOURISM 13

IMPORTANT INFORMATION 14

PURPOSE OF THIS CONCEPT PLAN

The purpose of the Jennings Concept Plan is to provide a strategic direction for future village improvements in order to achieve an environment which provides for the needs of its residents and visitors alike.

The Jennings Concept Plan builds on the research and community consultation undertaken by Tenterfield Shire Council and the community of Jennings. It identifies the areas that require embellishments in order to create a beautiful, functional and interesting area.

The ideas contained in this plan will also support Jennings as an attractive and appealing entrance into New South Wales. With future improvements to the Jennings Village it is envisaged more visitors to the region will stop and explore all that it has to offer and create a sense of community pride and ownership of the public spaces within the village.



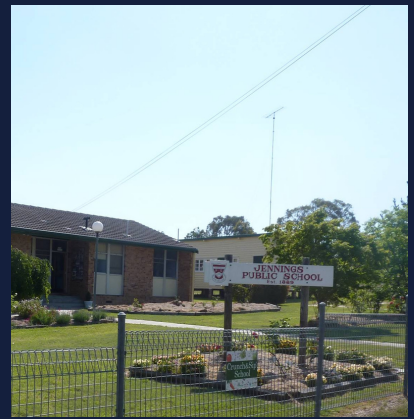
OUR STORY

The village of Jennings is located 24 km North of Tenterfield and is 260 km south west from Brisbane and 718 km from the NSW state capital of Sydney. Jennings originally was established in 1888 and currently has over 200 people residing there.

Jennings is situated on the traditional land of the Ngarabal. Council pays respect to the past, present and future Traditional Custodians and Elders of this nation and the continuation of cultural, spiritual and educational practices of Aboriginal and Torres Strait Islander peoples.

Jennings is a "twin town" with Wallangarra which are divided by the impressive Victorian-era railway station placed exactly on the border of New South Wales and Queensland, which became a busy rail interchange in the late 1800s. The border cuts across the platform and is well marked by the blue and maroon lines. There are other architectural design features of the station that help identify the different states, one of the more noticeable designs of the station is the bull nosed awning on the north platform forming a part of QLD and the southern platform has a historical flat awning in NSW. Each state used a different rail gauge, which meant that passengers had to disembark at the station and change trains in order to travel through the neighbouring state.

Jennings is named after the first Catholic Premier of New South Wales – Sir Patrick Jennings, the village has strong links with the Federation story where Sir Henry Parkes disembarked on the Queensland side of the Railway Station before travelling on to Tenterfield from the New South Wales side to deliver his famous Federation Speech in 1889.



OUR AIM

1. To create a welcoming village centre which reflects the stunning surrounding natural landscape in which it sits.
2. To encourage visitors passing through the NSW/QLD border to visit Jennings.
3. To revitalise and embellish the village park to entice people to stay, play and eat while absorbing the history of Jennings.
4. To recognise and actively develop our cultural strengths and unique heritage by creating an attractive heritage tourism trail around the village
5. To establish a community spirit which encourages a quality lifestyle, supports health and social well-being, promotes family life and lifestyle choices.



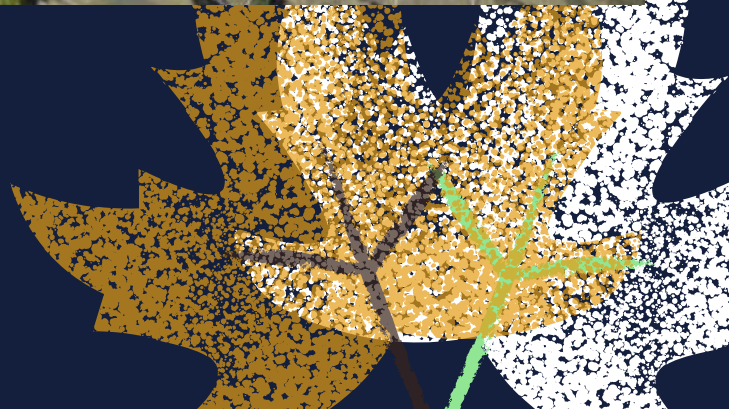
OUR VISION



See Page 7 for Main
Area Concept Plan

- 1 Installation of historical/directional interpretive panels including landscaping at the intersection of Duke St & Highway
- 2 Installation of new Exercise equipment and covered playground
- 3 Repair roadside drainage issues and plant footpath trees and install new bus shelter
- 4 Undercover seating and BBQ in Park
- 5 Plant shade trees along proposed footpath, parking area and throughout parkland
- 6 Develop gravel parking area for RV and patrons of the playground

MAIN AREA CONCEPT PLAN



KEY ACTIONS FOR JENNINGS



Create a welcoming setting within the village



Improvements to the Village Park



Create Interpretative Signs



Improve parking facilities for public areas



PUBLIC OPEN SPACE

Tenterfield Shire Council along with Wallangarra Jennings Progress Association seek to upgrade the playground, install exercise equipment, provide undercover seating, electric BBQ and develop a car park facility for RV patrons and visitors in the village of Jennings.

This enhancement to the playground/exercise equipment will ensure a healthier, safer and more child-friendly area that meets relevant standards is available for the the community and visitors, and to ensure BBQ facilities and seating is available for park users.

Upgrading the car parking facility will provide a space for RV patrons staying in the village, visitors to the park and to the village.



LINKAGES

Footpaths facilitate two primary groups of activities; moving activities and stationary activities. Good footpath design with suitable materials and furniture can successfully cater for both.

- Increased safety for pedestrians.
- Improves facilities for pedestrians (improves accessibility).
- May help to increase walking as a mode of transport (environmental benefits and reduced traffic congestion).
- Walking can improve health and fitness.

Footpath extension from the proposed car park to both the Public School and to the playground will provide accessibility, increased use of both spaces, and most importantly link the two spaces together.

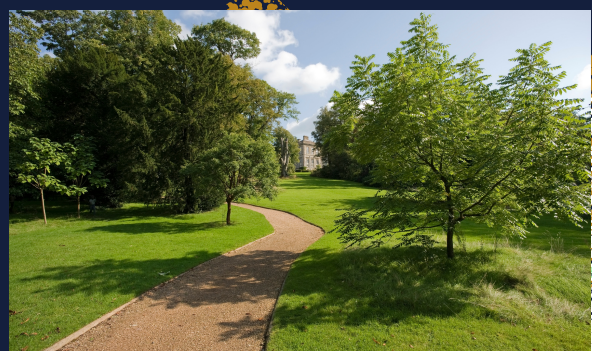
Repairs to street drainage will improve the management of storm water along the street



LANDSCAPING



- Proposed Tree planting along Gladstone Street once drainage has been resolved.
- Proposed tree planting around the playground, BBQ area and footpath to provide a more welcoming space to visit and stay
- Planting trees around the border of proposed car park to provide shade for vehicles
- Installation of new Playground and exercise equipment will provide the children of the village and visitors to the area somewhere to meet up and play or have a exercise session with friends.
- Upgrades to the garden and BBQ facility in Jennings park will provide a meeting place for the residents and visitors to the village.



TOURISM

Even though the Railway line in NSW is no longer operational, the railway station now acts as a beautifully restored interactive heritage museum, café and function centre.

Jennings is only 5.5 km from the stunning Mount Norman walk, and offers easy access to Girraween National Park, a naturalist's paradise, offering visitors a vast array of rock formations to discover, walking and mountain bike tracks to explore, calming waterholes and creeks to relax beside, and an abundance of wildlife to meet. Challenge yourself to conquer the highest peak in the Park, Mount Norman, accessible from Wallangarra. Mount Norman Road also offers exciting 4WD opportunities for thrill seekers and adventure chasers.

Ways to promote Tourism

- Develop an updated tourism brochure that would engage visitors and promote places of interest.
- Work with National Parks
- Include in advertising campaigns - showcasing the fascinating history and spectacular bush landscapes.



IMPORTANT INFORMATION

MOVING FORWARD

A range of village improvements have been proposed for Jennings responding to ideas raised during analysis and in consultation with the community. Jennings has a lively community and presents itself as a great place to live and to visit. Low cost improvements include footpath, tree planting and interpretative signage. Higher cost items include car parking area and playground equipment.

The Jennings Concept Plan will provide a blueprint for future village improvements and a focus for improving the functioning and aesthetics of the village as funds and resources become available.

The Concept Plan acts as a valuable tool in seeking funding for the projects identified in to the future.

CONTACT

Tenterfield Shire Council

247 Rouse Street
(PO Box 214)
TENTERFIELD NSW 2372

Phone: 02 6736 6000
Email: council@tenterfield.nsw.gov.au
Website: www.tenterfield.nsw.gov.au

Proudly funded by

