

# VILLAGE CONCEPT PLAN

*Step out of your  
imagination and into the  
unspoilt beauty of  
Tenterfield Shire*

*It's humble....*

*It's authentic...*

*It's True.*



# TORRINGTON

This plan was adopted by Council on  
25 May 2022 Resolution Number 93/22





# CONTENTS



PURPOSE OF THIS CONCEPT PLAN.....	3
OUR STORY .....	4
OUR AIMS .....	5
OUR VISION .....	6
MAIN AREA CONCEPT PLAN .....	7
KEY ACTIONS FOR TORRINGTON .....	8
COMMUNITY CONSULTATION .....	9
PUBLIC OPEN SPACE .....	10
LINKAGE .....	11
LANDSCAPE .....	12
TOURISM .....	13
IMPORTANT INFORMATION .....	14



# PURPOSE OF THIS CONCEPT PLAN

The purpose of the Torrington Concept Plan is to provide a strategic direction for future village improvements in order to achieve an environment which provides for the needs of its residents and visitors alike.

The Torrington Concept Plan builds on the research and community consultation undertaken by Tenterfield Shire Council and the community of Torrington. It identifies the areas that require embellishments in order to create a beautiful, functional and interesting area.

The ideas contained in this study will also provide Torrington State Conservation Area an attractive and appealing entrance into the park. With future improvements to Torrington Village it is envisaged more visitors to the region will stop and explore all that it has to offer and create a sense of community pride and ownership of the public spaces within the village.





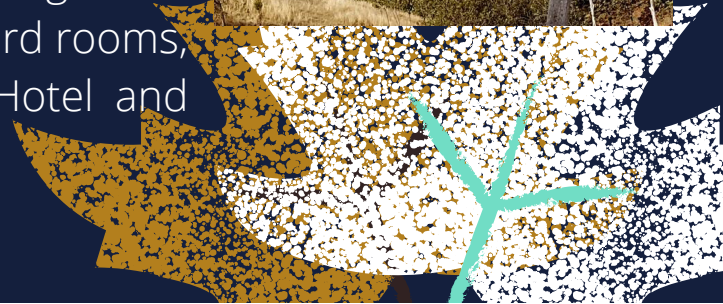
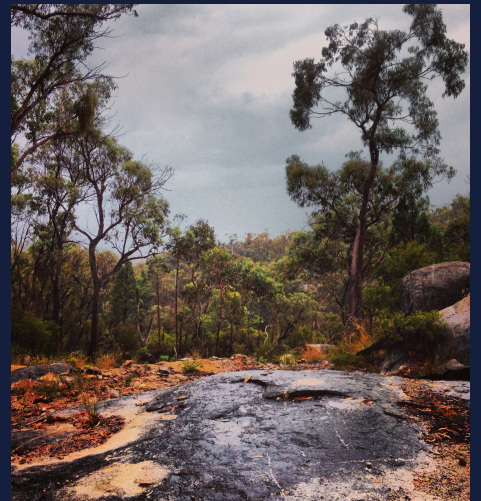
# OUR STORY

Torrington is a place where Aboriginal Dreamtime stories come alive. The land, waterways, wildlife and plants of the area are significant for the Ngarrabul, Marbul, Bigambul and Jucumbul people – the traditional owners.

Torrington was named after its English counterpart in Devon. In 1881 the discovery of an extremely rich tin lode, set the scene for significant growth in mining.

Torrington lies 29 km north west of Deepwater and south west of Tenterfield and 61 km from Glen Innes and is situated on a plateau known as the Mole Tableland, close to the Queensland border on the New England Northern Tablelands. Surrounded by State and National Parks with significant areas of flora and fauna, this area provides fishing, fossicking, canoeing and swimming opportunities in its numerous nearby streams.

By 1920 - 500 men were employed in the district mines. To support this thriving community Torrington and the two (2) now defunct satellite villages, Tungsten & Bismuth, housed 5 general stores, butcher shop, cafes, bakery, billiard rooms, Police Station, Post Office, Churches, Hotel and many sporting facilities.





# OUR AIM

1. To create a welcoming low maintenance village centre which reflects the stunning surrounding natural landscape in which it sits.
2. To capitalise on day trip visitation by promoting things to see and do, including creating an interactive tourism trail around the village.
3. To revitalise the village to entice people to take in the spectacular scenery Torrington has to offer.
4. To recognise and actively develop the cultural strengths and unique heritage
5. To establish a community spirit which encourages a quality lifestyle, supports health and social well-being, promotes family life and lifestyle choices.





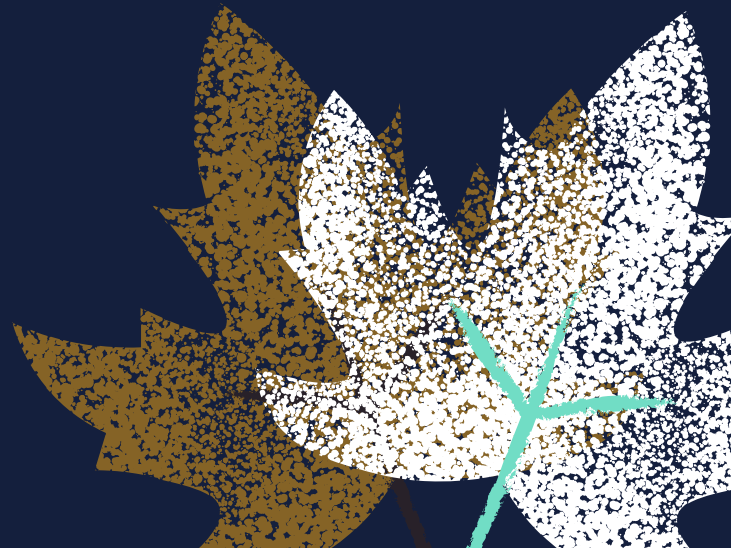
# OUR VISION



- 1 Upgrade to carpark and footpath to service hall and playground
- 2 Playground for children and visitors, upgrades to BBQ area,
- 3 Heritage interpretative panels throughout village and a Community Notice Board at the Hall
- 4 Tree planting along Torrington & Bates Road
- 5 Upgrade Fencing to Torrington Cemetery & Installation of Cemetery Sign
- 6 Install a picket fence around park
- 7 Install tank and garden beds and trees around the park



# MAIN AREA CONCEPT PLAN





# KEY ACTIONS FOR TORRINGTON



Create a welcoming setting  
within the village



Improvements to the Village Cemetery



Create Interpretative Signage



Improve parking facilities  
for public areas





# COMMUNITY CONSULTATION

The community of Torrington were invited to brainstorm ideas and issues for the future of the village. The information package was sent to the Torrington Hall Committee on 20 August 2020 and again in January 2022. Staff at Tenterfield Shire Council also have viewed the draft plans and included future works into the plans.



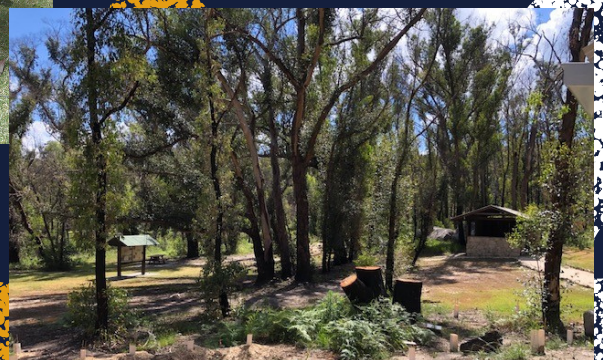
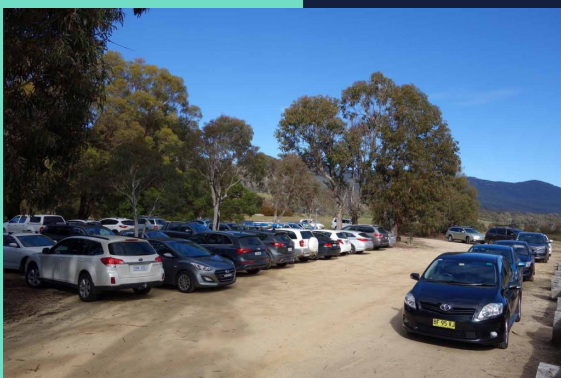
# PUBLIC OPEN SPACE

Tenterfield Shire Council in conjunction with the Torrington War Memorial & Recreation Reserve Board are seeking to identify future works to revitalise the village by identifying the following projects;

- Upgrade the playground
- Provide seating and upgrade the existing car park facility

The enhancement of the playground and Cricket Grounds will ensure a safe and child-friendly area that meets relevant standards and is available for the community and visitors.

Upgrading the car parking facility will provide a space for patrons to the hall, visitors to the park and village.



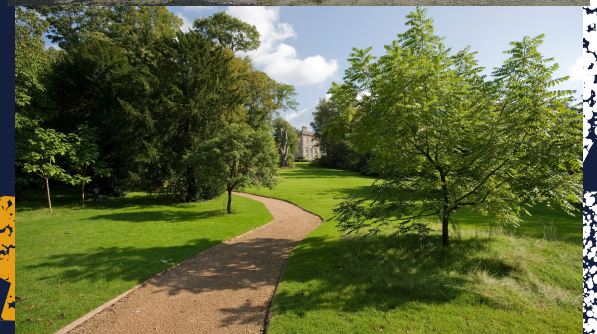


# LINKAGES

Footpaths facilitate two primary groups of activities; moving activities and stationary activities. Good footpath design with suitable materials and furniture can successfully cater for both.

- Increased safety for pedestrians.
- Improves facilities for pedestrians (improves accessibility).
- May help to increase walking as a mode of transport (environmental benefits).
- Walking can improve health and fitness.

Footpath from the proposed car park to both the Community Hall and to the playground will provide accessibility, increased use of both spaces, and most importantly link the two spaces together.

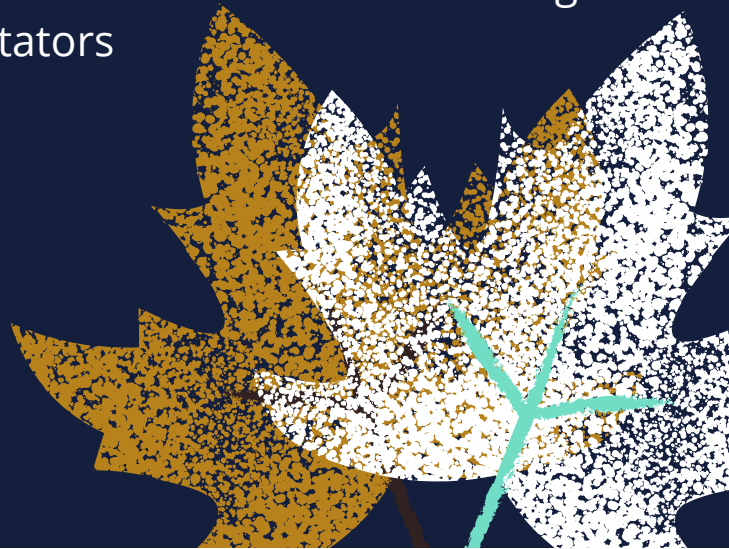




# LANDSCAPING



- Proposed tree planting along Torrington Road & Bates Road
- Proposed tree planting around the playground and BBQ Area to provide a more welcoming space to visit
- Planting trees around the border of updated car park to provide shade for vehicles
- Installation of new playground will provide the children of the village and visitors to the area somewhere to meet up and play and rest
- Upgrades to the BBQ facility in Torrington park will provide a meeting place for the residents and visitors
- Installation of toilets and shower on the Cricket Grounds and maintenance to Cricket Pitch and seating for spectators





# TOURISM

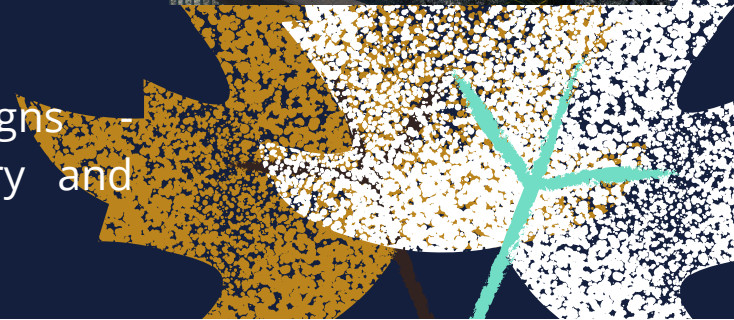
Adventure awaits in the quiet village of Torrington, with old mine sites, national Parkland, and bushranger history waiting to be explored.

Within Torrington State Conservation Area, visitors can explore the 30,000 hectares of untamed wilderness on one of the walking trails, view magnificent rock formations, including Mystery Face, explore the waterfalls, or visit Thunderbolts Lookout, presenting 360 degree views - a great vantage point to take in the stunning landscapes of the area.

Mining has given way to fossicking and visitors can enjoy the spectacular scenery of rocky granite outcrops, steep gorges, gently flowing streams as they are fossicking for topaz, beryl and quartz.

## Ways to promote Tourism

- Develop an updated tourism brochure to engage visitors and promote places of interest.
- Work with National Parks
- Include in advertising campaigns - showcasing the fascinating history and spectacular bush landscapes.





# IMPORTANT INFORMATION

## MOVING FORWARD

A range of village improvements have been proposed for Torrington responding to ideas raised during analysis and from the community. Torrington presents itself as a great place to live and to visit. Low cost improvements include footpath, tree planting and heritage signage. Higher cost items include car parking area and playground equipment.

The Torrington Concept Plan will provide a blueprint for future village improvements and a focus for improving the functioning and aesthetics for the village as funds and resources become available.

The Concept Plan acts as a valuable tool in seeking funding for the projects identified in to the future.

Proudly funded by



## CONTACT

Tenterfield Shire Council

247 Rouse Street  
(PO Box 214)  
TENTERFIELD NSW 2372

Phone: 02 6736 6000

Email: [council@tenterfield.nsw.gov.au](mailto:council@tenterfield.nsw.gov.au)

Website: [www.tenterfield.nsw.gov.au](http://www.tenterfield.nsw.gov.au)

