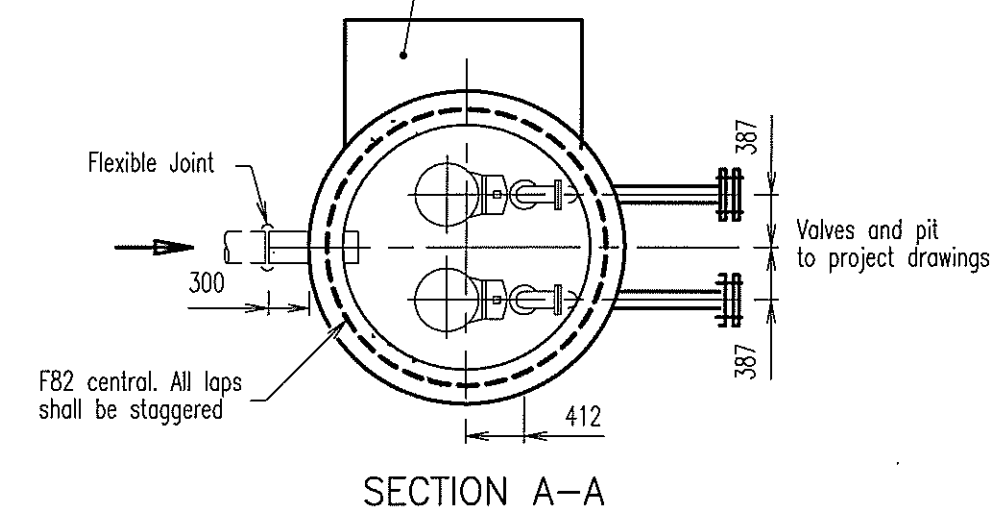
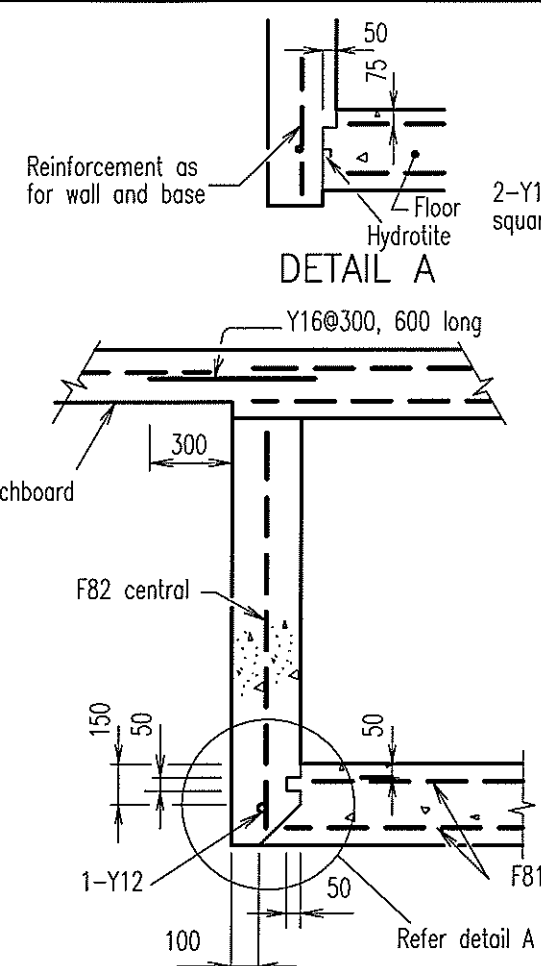


SECTIONAL ELEVATION

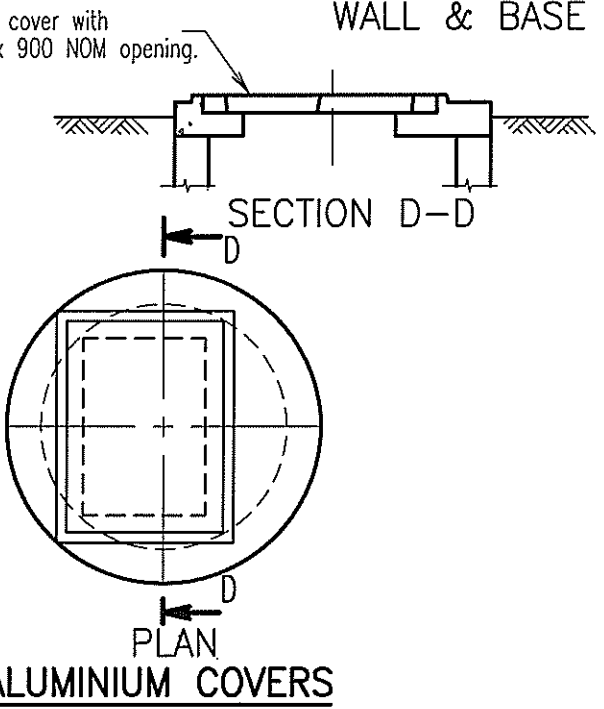
Concrete slab for switchboard 150mm thick reinforced with F82 placed centrally 50 edge cover. Refer project drawings for shape of slab and conduit requirements



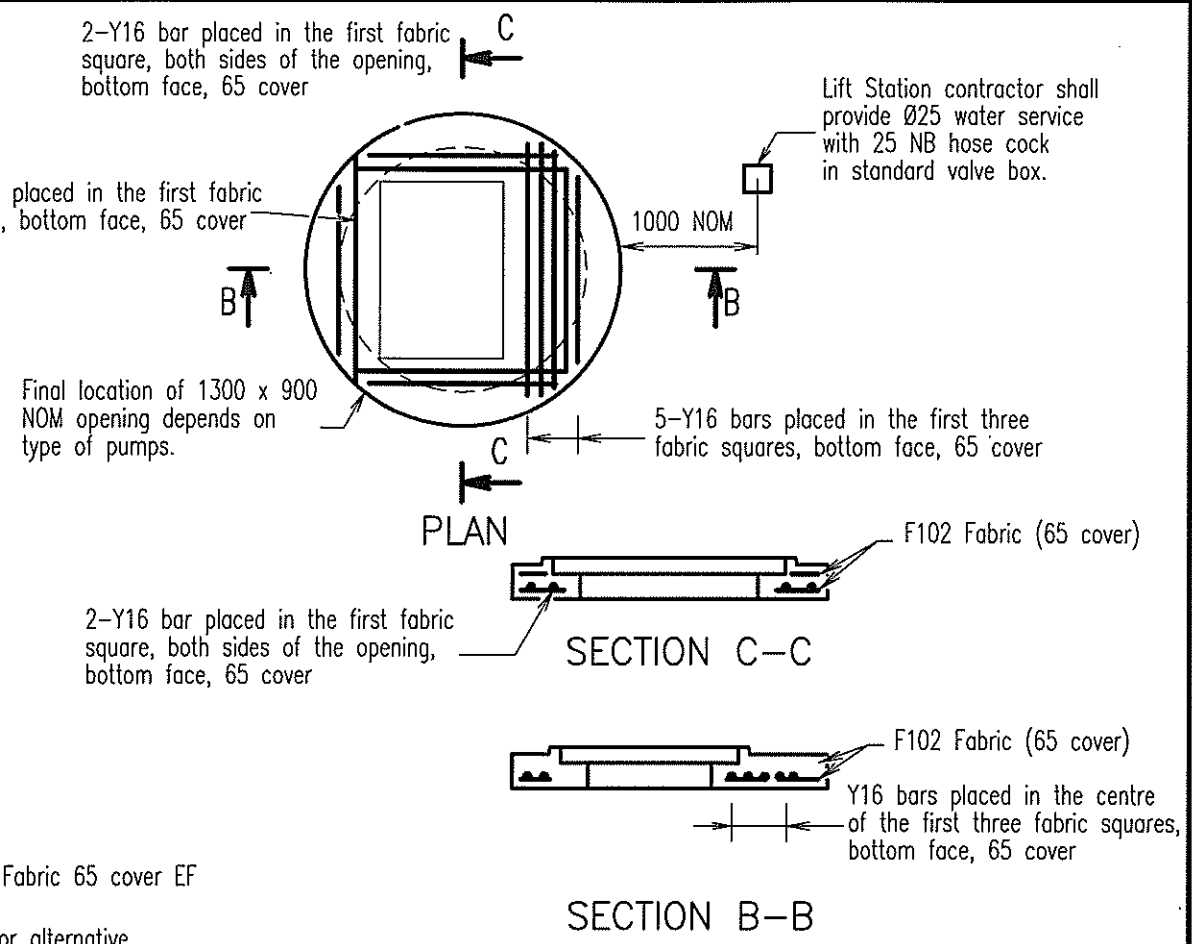
SECTION A-A



WALL & BASE



ALUMINIUM COVERS

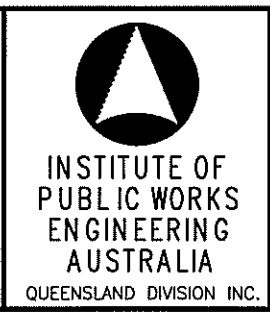


REINFORCEMENT DETAILS

- NOTES:**
1. Refer project documentation for specific details.
 2. Joint between roof and walls shall be well scabbled and roof shall be bedded in mortar containing an approved waterproof adhesive additive to manufacturer's instructions.
 3. Concrete S32 in accordance with AS 1379 and AS 3600.
 4. Steel reinforcing bars and fabric to AS 1302 and AS 1304.
 5. All internal surfaces of the pumpwell and valve pit shall be coated with Peerless Emulsion "Epigen 1311" or Wattyl "Sigmaguard CSF75". The concrete surface shall be smooth and free from holes and lightly sandblasted or acid-etched before painting. The concrete surface shall have cured for not less than 28 days. The paint shall be applied in two coats with a total dry film thickness of not less than 600 microns.
 6. Floor thicknesses shown are minimum only, thickness to counter flotation of structure shall be determined by the designer.
 7. The covers shall be gastight similar to those produced by Halco Engineering. All components of access covers and frames shall be fabricated from aluminium alloy 6061-T6, to AS 2848. All embedded surfaces shall be painted with two coats of alkali resistant bitumous paint. The covers shall be designed as a platform in accordance with AS 1657. Fabrication details shall be submitted to the Superintendent for approval prior to manufacture.
 8. If covers are subject to vehicular loading, use appropriately rated C.I. covers to AS 3996.
 9. All welds to AS 1554. All welding symbols comply with AS 1101.3.
 10. An overflow shall be provided with the invert level 300 below the surface level of the lowest chamber in the system, subject to the approval by D.E.H.
 11. Roof design to Austroads W7 wheel load, dynamic factor 0.4.
 12. Wall reinforcement based on well depth of 8m MAX.
 13. All dimensions in millimetres.

A	ORIGINAL ISSUE	8/12/95
	REVISIONS	DATE

© INSTITUTE OF PUBLIC WORKS ENGINEERING AUSTRALIA QUEENSLAND DIVISION INC. -1995
DISCLAIMER. The authors and sponsoring organisations shall have no liability or responsibility to the user or any other person or entity with respect to any liability, loss or damage caused or alleged to be caused, directly or indirectly, by the adoption and use of these Standard Drawings including, but not limited to, any interruption of service, loss of business or anticipatory profits, or consequential damages resulting from the use of these Standard Drawings. Persons must not rely on these Standard Drawings as the equivalent of, or a substitute for, project-specific design and assessment by an appropriately qualified professional.



LIFT STATION - SUBMERSIBLE
1800mm DIAMETER (0-20L/Sec)

SEWERAGE
Standard
Drawing
S-0057