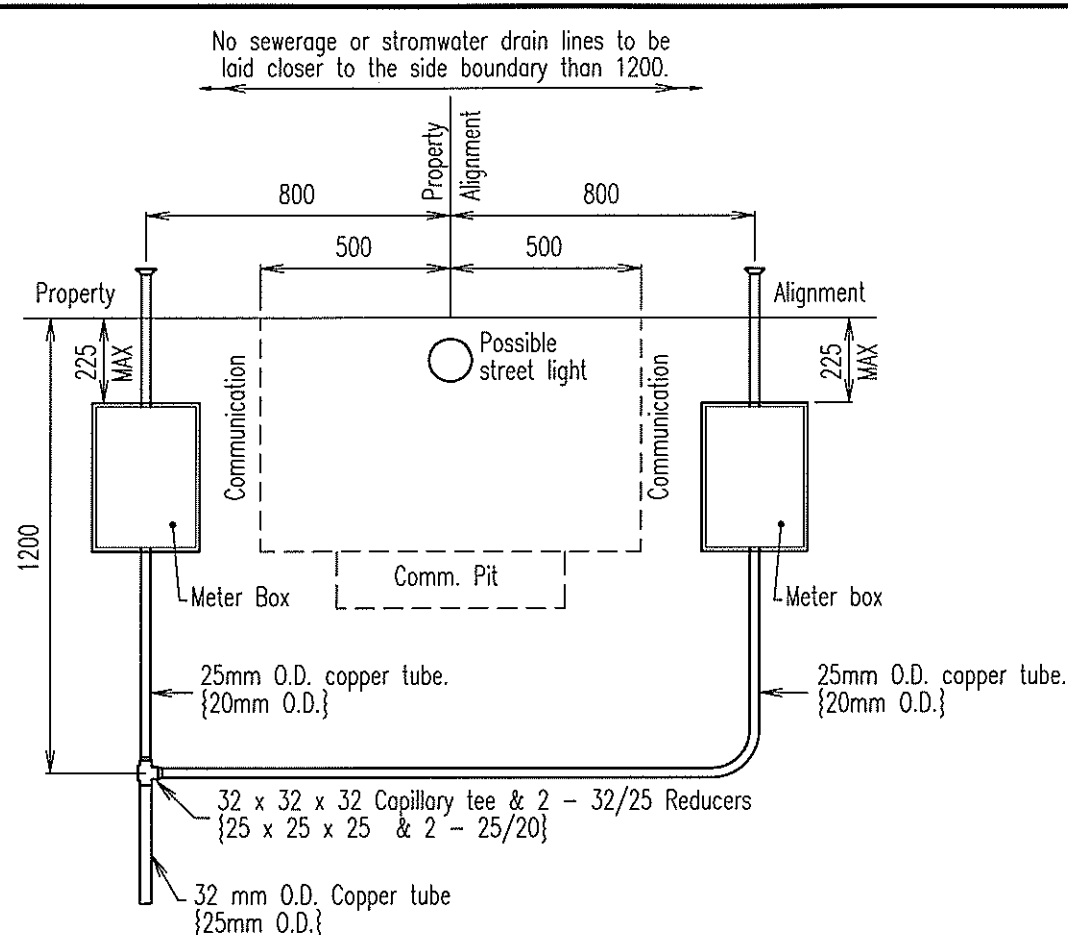


ALTERNATIVE 1

**20mm MULTIPLE SERVICES
DETAIL AT PROPERTY LINE**

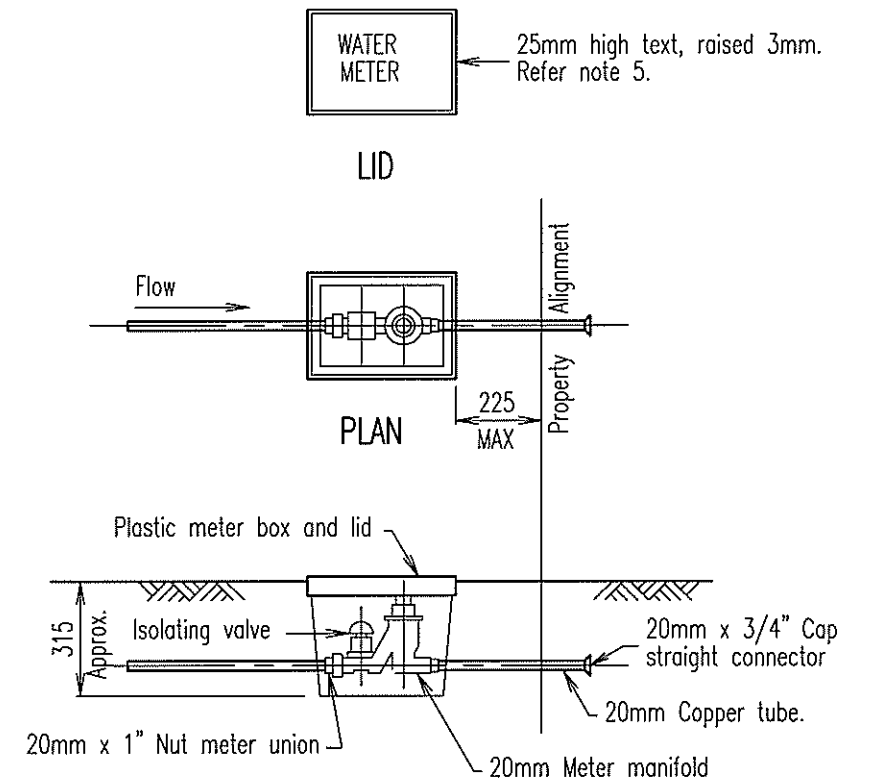
25mm MULTIPLE SERVICE dimensions shown thus:- {25mm O.D.}



ALTERNATIVE 2

**25mm MULTIPLE SERVICES
DETAIL AT PROPERTY LINE**

20mm MULTIPLE SERVICE dimensions shown thus:- {20mm O.D.}



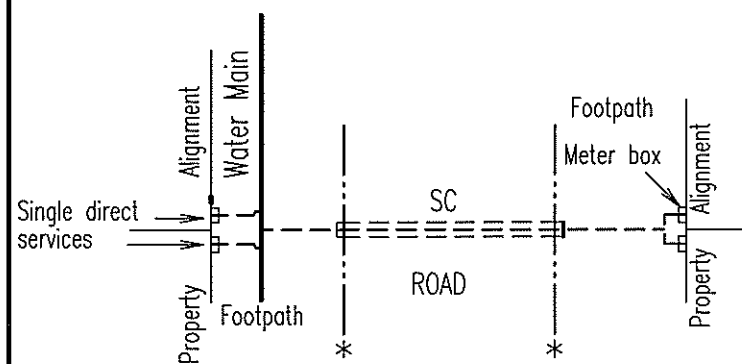
METER BOX

LEGEND

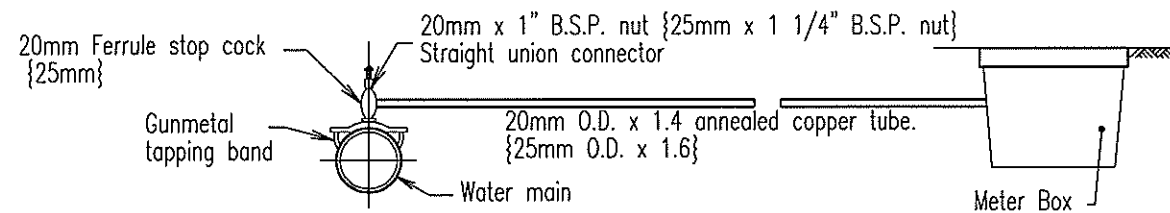
- * NOM. kerb line
- SC Service conduit. 100 DIA Class 12 uPVC or
- = = = 100 DIA concrete/FC pipes (S & F) Class C or S (R.R.J)

NOTES

1. Copper tubing and connectors:-
 - (a) All copper tubing shall be in accordance with AS 1432.
 - (b) All capillary and compression fittings shall be in accordance with AS 3688.
 - (c) All capillary fittings shall have long engagement sockets.
2. Ferrule stop cock must be installed with outlet at 90° to line of service to create an expansion loop and to allow for future replacement of copper pipe.
3. The section of main at the proposed tapping point must be first cleaned and wrapped with a minimum of two layers of self-adhesive polyvinylchloride wrapping.
4. A 20mm meter is to be installed on all services, (20mm & 25mm) unless otherwise specified on the project drawings.
5. Top side of Meter box lid to be slip proof.
6. Adopt layout alternative as required by the Service Authority.
7. All dimensions in millimetres.

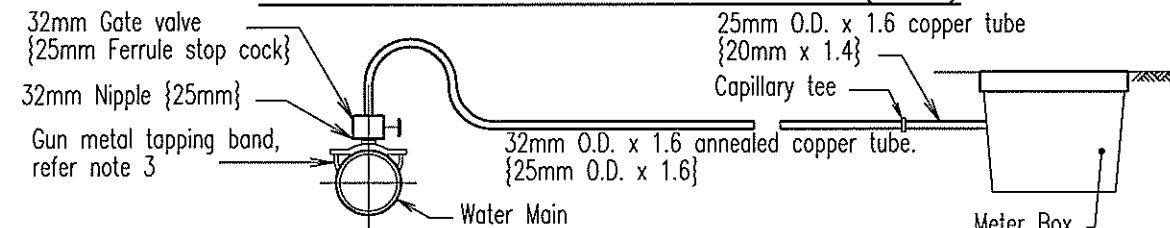


SERVICES LAYOUT



20mm SINGLE SERVICES

25mm SINGLE SERVICE dimensions shown thus:- {25mm}

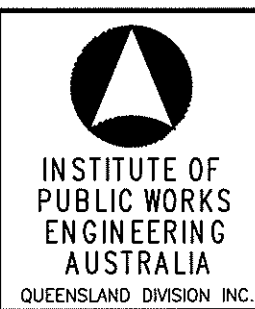


32mm MULTIPLE SERVICES

25mm MULTIPLE SERVICE dimensions shown thus:- {25mm}

A	ORIGINAL ISSUE	8/12/95
	REVISIONS	DATE

© INSTITUTE OF PUBLIC WORKS ENGINEERING AUSTRALIA QUEENSLAND DIVISION INC. -1995
DISCLAIMER. The authors and sponsoring organisations shall have no liability or responsibility to the user or any other person or entity with respect to any liability, loss or damage caused or alleged to be caused, directly or indirectly, by the adoption and use of these Standard Drawings including, but not limited to, any interruption of service, loss of business or anticipatory profits, or consequential damages resulting from the use of these Standard Drawings. Persons must not rely on these Standard Drawings as the equivalent of, or a substitute for, project-specific design and assessment by an appropriately qualified professional.



**WATER CONNECTIONS
SINGLE AND DOUBLE
BELOW GROUND METER**

**WATER
Standard
Drawing
W-0091**